



INTERNATIONAL GEMOLOGICAL INSTITUTE

DIAMOND REPORT

August 30, 2025

IGI Report Number

727539895

Description

NATURAL DIAMOND

Shape and Cutting Style

ROUND BRILLIANT

Measurements

5.13 - 5.17 X 3.17 MM

GRADING RESULTS

Carat Weight

0.51 CARAT

Color Grade

I

Clarity Grade

SI 2

Cut Grade

EXCELLENT

ADDITIONAL GRADING INFORMATION

Polish

VERY GOOD

Symmetry

EXCELLENT

Fluorescence

STRONG

Identification Features

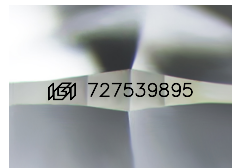
FEATHER

Inscription(s)

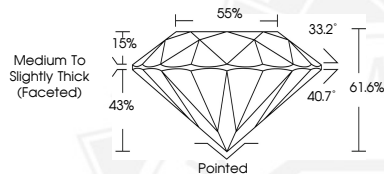
IGI 727539895

Comments: IDEAL CUT ROUND BRILLIANT

ELECTRONIC COPY



Sample Image Used



August 30, 2025

IGI Report Number 727539895

ROUND BRILLIANT

NATURAL DIAMOND

5.13 - 5.17 X 3.17 MM

Carat Weight 0.51 CARAT

Color Grade I

Clarity Grade SI 2

Cut Grade EXCELLENT

Polish VERY GOOD

Symmetry EXCELLENT

Fluorescence STRONG

Inscription(s) IGI 727539895

Comments: IDEAL CUT ROUND

BRILLIANT



August 30, 2025

IGI Report Number 727539895

ROUND BRILLIANT

NATURAL DIAMOND

5.13 - 5.17 X 3.17 MM

Carat Weight 0.51 CARAT

Color Grade I

Clarity Grade SI 2

Cut Grade EXCELLENT

Polish VERY GOOD

Symmetry EXCELLENT

Fluorescence STRONG

Inscription(s) IGI 727539895

Comments: IDEAL CUT ROUND

BRILLIANT



THIS DOCUMENT WAS PRODUCED WITH THE FOLLOWING SECURITY MEASURES: SPECIAL DOCUMENT PAPER, INK SCREENS, WATERMARK, BACKGROUND DESIGNS, HOLOGRAM AND OTHER SECURITY FEATURES NOT LISTED AND DO EXCEED DOCUMENT SECURITY INDUSTRY GUIDELINES.

For terms & conditions and to verify this report, please visit www.igi.org