



INTERNATIONAL GEMOLOGICAL INSTITUTE

DIAMOND REPORT

August 26, 2025

IGI Report Number

727539770

Description

NATURAL DIAMOND

Shape and Cutting Style

ROUND BRILLIANT

Measurements

5.71 - 5.75 X 3.44 MM

GRADING RESULTS

Carat Weight

0.70 CARAT

Color Grade

H

Clarity Grade

SI 2

Cut Grade

EXCELLENT

ADDITIONAL GRADING INFORMATION

Polish

EXCELLENT

Symmetry

EXCELLENT

Fluorescence

NONE

Identification Features

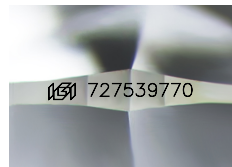
FEATHER, CRYSTAL CLOUD

Inscription(s)

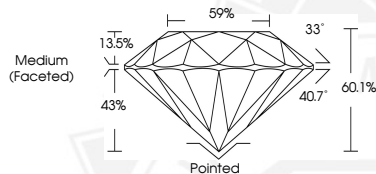
IGI 727539770

Comments: IDEAL CUT ROUND BRILLIANT

ELECTRONIC COPY



Sample Image Used



THIS DOCUMENT WAS PRODUCED WITH THE FOLLOWING SECURITY MEASURES: SPECIAL DOCUMENT PAPER, INK SCREENS, WATERMARK, BACKGROUND DESIGNS, HOLOGRAM AND OTHER SECURITY FEATURES NOT LISTED AND DO EXCEED DOCUMENT SECURITY INDUSTRY GUIDELINES.

For terms & conditions and to verify this report, please visit www.igi.org



August 26, 2025

IGI Report Number 727539770

ROUND BRILLIANT

NATURAL DIAMOND

5.71 - 5.75 X 3.44 MM

Carat Weight 0.70 CARAT

Color Grade H

Clarity Grade SI 2

Cut Grade EXCELLENT

Polish EXCELLENT

Symmetry EXCELLENT

Fluorescence NONE

Inscription(s) IGI 727539770

Comments: IDEAL CUT ROUND

BRILLIANT



August 26, 2025

IGI Report Number 727539770

ROUND BRILLIANT

NATURAL DIAMOND

5.71 - 5.75 X 3.44 MM

Carat Weight 0.70 CARAT

Color Grade H

Clarity Grade SI 2

Cut Grade EXCELLENT

Polish EXCELLENT

Symmetry EXCELLENT

Fluorescence NONE

Inscription(s) IGI 727539770

Comments: IDEAL CUT ROUND

BRILLIANT