



# INTERNATIONAL GEMOLOGICAL INSTITUTE

## DIAMOND REPORT

August 25, 2025

IGI Report Number

727539468

Description

NATURAL DIAMOND

Shape and Cutting Style

ROUND BRILLIANT

Measurements

4.62 - 4.68 X 2.92 MM

### GRADING RESULTS

Carat Weight

0.40 CARAT

Color Grade

I

Clarity Grade

SI 1

Cut Grade

EXCELLENT

### ADDITIONAL GRADING INFORMATION

Polish

EXCELLENT

Symmetry

EXCELLENT

Fluorescence

NONE

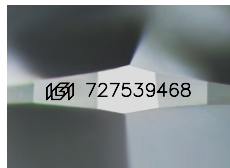
Identification Features

FEATHER

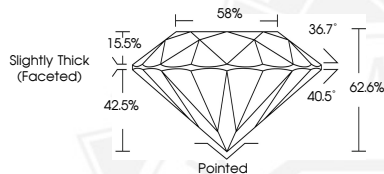
Inscription(s)

IGI 727539468

ELECTRONIC COPY



Sample Image Used



THIS DOCUMENT WAS PRODUCED WITH THE FOLLOWING SECURITY MEASURES: SPECIAL DOCUMENT PAPER, INK SCREENS, WATERMARK, BACKGROUND DESIGNS, HOLOGRAM AND OTHER SECURITY FEATURES NOT LISTED AND DO EXCEED DOCUMENT SECURITY INDUSTRY GUIDELINES.

For terms & conditions and to verify this report, please visit [www.igi.org](http://www.igi.org)



August 25, 2025

IGI Report Number 727539468

ROUND BRILLIANT

NATURAL DIAMOND

4.62 - 4.68 X 2.92 MM

Carat Weight 0.40 CARAT

Color Grade I

Clarity Grade SI 1

Cut Grade EXCELLENT

Polish EXCELLENT

Symmetry EXCELLENT

Fluorescence NONE

Inscription(s) IGI 727539468



August 25, 2025

IGI Report Number 727539468

ROUND BRILLIANT

NATURAL DIAMOND

4.62 - 4.68 X 2.92 MM

Carat Weight 0.40 CARAT

Color Grade I

Clarity Grade SI 1

Cut Grade EXCELLENT

Polish EXCELLENT

Symmetry EXCELLENT

Fluorescence NONE

Inscription(s) IGI 727539468