



INTERNATIONAL GEMOLOGICAL INSTITUTE

ELECTRONIC COPY

DIAMOND REPORT

August 25, 2025

IGI Report Number

727539441

Description

NATURAL DIAMOND

Shape and Cutting Style

ROUND BRILLIANT

Measurements

4.86 - 4.90 X 3.07 MM

GRADING RESULTS

Carat Weight

0.45 CARAT

Color Grade

I

Clarity Grade

VS 1

Cut Grade

EXCELLENT

ADDITIONAL GRADING INFORMATION

Polish

EXCELLENT

Symmetry

EXCELLENT

Fluorescence

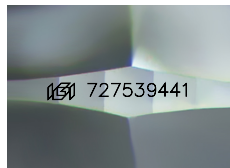
NONE

Identification Features

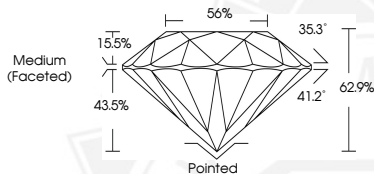
CLOUD, FEATHER

Inscription(s)

727539441



Sample Image Used



August 25, 2025

IGI Report Number 727539441

ROUND BRILLIANT

NATURAL DIAMOND

4.86 - 4.90 X 3.07 MM

Carat Weight 0.45 CARAT

Color Grade I

Clarity Grade VS 1

Cut Grade EXCELLENT

Polish EXCELLENT

Symmetry EXCELLENT

Fluorescence NONE

Inscription(s) 727539441



August 25, 2025

IGI Report Number 727539441

ROUND BRILLIANT

NATURAL DIAMOND

4.86 - 4.90 X 3.07 MM

Carat Weight 0.45 CARAT

Color Grade I

Clarity Grade VS 1

Cut Grade EXCELLENT

Polish EXCELLENT

Symmetry EXCELLENT

Fluorescence NONE

Inscription(s) 727539441



THIS DOCUMENT WAS PRODUCED WITH THE FOLLOWING SECURITY MEASURES: SPECIAL DOCUMENT PAPER, INK SCREENS, WATERMARK, BACKGROUND DESIGNS, HOLOGRAM AND OTHER SECURITY FEATURES NOT LISTED AND DO EXCEED DOCUMENT SECURITY INDUSTRY GUIDELINES.

For terms & conditions and to verify this report, please visit www.igi.org