



August 19, 2025

IGI Report Number 727539030

ROUND BRILLIANT

NATURAL DIAMOND

4.24 - 4.27 X 2.64 MM

Carat Weight 0.30 CARAT
Color Grade G
Clarity Grade SI 2
Cut Grade EXCELLENT
Polish EXCELLENT
Symmetry EXCELLENT
Fluorescence NONE
Inscription(s) (G) 727539030

DIAMOND REPORT

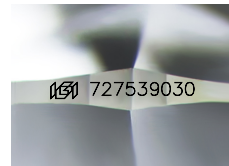
August 19, 2025 727539030
IGI Report Number
Description NATURAL DIAMOND
Shape and Cutting Style ROUND BRILLIANT
Measurements 4.24 - 4.27 X 2.64 MM

GRADING RESULTS

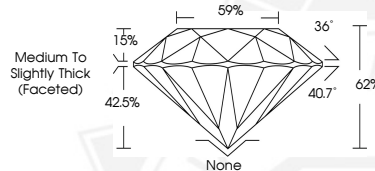
Carat Weight 0.30 CARAT
Color Grade G
Clarity Grade SI 2
Cut Grade EXCELLENT

ADDITIONAL GRADING INFORMATION

Polish EXCELLENT
Symmetry EXCELLENT
Fluorescence NONE
Identification Features FEATHER, CRYSTAL, CAVITY
Inscription(s) (G) 727539030



Sample Image Used



August 19, 2025

IGI Report Number 727539030

ROUND BRILLIANT

NATURAL DIAMOND

4.24 - 4.27 X 2.64 MM

Carat Weight 0.30 CARAT
Color Grade G
Clarity Grade SI 2
Cut Grade EXCELLENT
Polish EXCELLENT
Symmetry EXCELLENT
Fluorescence NONE
Inscription(s) (G) 727539030



THIS DOCUMENT WAS PRODUCED WITH THE FOLLOWING SECURITY MEASURES: SPECIAL DOCUMENT PAPER, INK SCREENS, WATERMARK, BACKGROUND DESIGNS, HOLOGRAM AND OTHER SECURITY FEATURES NOT LISTED AND DO EXCEED DOCUMENT SECURITY INDUSTRY GUIDELINES.