



# INTERNATIONAL GEMOLOGICAL INSTITUTE

## DIAMOND REPORT

August 21, 2025

IGI Report Number

727538994

Description

NATURAL DIAMOND

Shape and Cutting Style

ROUND BRILLIANT

Measurements

5.13 - 5.15 X 3.17 MM

### GRADING RESULTS

Carat Weight

0.50 CARAT

Color Grade

I

Clarity Grade

SI 2

Cut Grade

EXCELLENT

### ADDITIONAL GRADING INFORMATION

Polish

EXCELLENT

Symmetry

EXCELLENT

Fluorescence

NONE

Identification Features

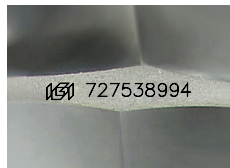
FEATHER, CRYSTAL

Inscription(s)

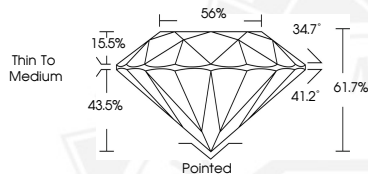
IGI 727538994

Comments: IDEAL CUT ROUND BRILLIANT

ELECTRONIC COPY



Sample Image Used



THIS DOCUMENT WAS PRODUCED WITH THE FOLLOWING SECURITY MEASURES: SPECIAL DOCUMENT PAPER, INK SCREENS, WATERMARK, BACKGROUND DESIGNS, HOLOGRAM AND OTHER SECURITY FEATURES NOT LISTED AND DO EXCEED DOCUMENT SECURITY INDUSTRY GUIDELINES.

For terms & conditions and to verify this report, please visit [www.igi.org](http://www.igi.org)



August 21, 2025

IGI Report Number 727538994

ROUND BRILLIANT

NATURAL DIAMOND

5.13 - 5.15 X 3.17 MM

Carat Weight 0.50 CARAT

Color Grade I

Clarity Grade SI 2

Cut Grade EXCELLENT

Polish EXCELLENT

Symmetry EXCELLENT

Fluorescence NONE

Inscription(s) IGI 727538994

Comments: IDEAL CUT ROUND

BRILLIANT



August 21, 2025

IGI Report Number 727538994

ROUND BRILLIANT

NATURAL DIAMOND

5.13 - 5.15 X 3.17 MM

Carat Weight 0.50 CARAT

Color Grade I

Clarity Grade SI 2

Cut Grade EXCELLENT

Polish EXCELLENT

Symmetry EXCELLENT

Fluorescence NONE

Inscription(s) IGI 727538994

Comments: IDEAL CUT ROUND

BRILLIANT