



# INTERNATIONAL GEMOLOGICAL INSTITUTE

ELECTRONIC COPY

## DIAMOND REPORT

August 14, 2025  
IGI Report Number  
Description  
Shape and Cutting Style  
Measurements

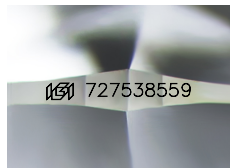
**727538559**  
**NATURAL DIAMOND**  
**ROUND BRILLIANT**  
**5.02 - 5.06 X 3.17 MM**

## GRADING RESULTS

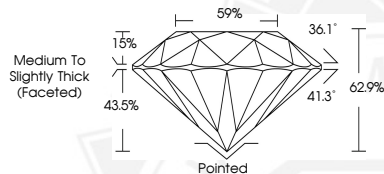
Carat Weight **0.50 CARAT**  
Color Grade **I**  
Clarity Grade **SI 2**  
Cut Grade **EXCELLENT**

## ADDITIONAL GRADING INFORMATION

Polish **EXCELLENT**  
Symmetry **EXCELLENT**  
Fluorescence **NONE**  
Identification Features **FEATHER**  
Inscription(s) **(IGI) 727538559**



Sample Image Used



August 14, 2025  
IGI Report Number **727538559**  
**ROUND BRILLIANT**  
**NATURAL DIAMOND**  
**5.02 - 5.06 X 3.17 MM**  
Carat Weight **0.50 CARAT**  
Color Grade **I**  
Clarity Grade **SI 2**  
Cut Grade **EXCELLENT**  
Polish **EXCELLENT**  
Symmetry **EXCELLENT**  
Fluorescence **NONE**  
Inscription(s) **(IGI) 727538559**



August 14, 2025  
IGI Report Number **727538559**  
**ROUND BRILLIANT**  
**NATURAL DIAMOND**  
**5.02 - 5.06 X 3.17 MM**  
Carat Weight **0.50 CARAT**  
Color Grade **I**  
Clarity Grade **SI 2**  
Cut Grade **EXCELLENT**  
Polish **EXCELLENT**  
Symmetry **EXCELLENT**  
Fluorescence **NONE**  
Inscription(s) **(IGI) 727538559**



THIS DOCUMENT WAS PRODUCED WITH THE FOLLOWING SECURITY MEASURES: SPECIAL DOCUMENT PAPER, INK SCREENS, WATERMARK, BACKGROUND DESIGNS, HOLOGRAM AND OTHER SECURITY FEATURES NOT LISTED AND DO EXCEED DOCUMENT SECURITY INDUSTRY GUIDELINES.

For terms & conditions and to verify this report, please visit [www.igi.org](http://www.igi.org)