



# INTERNATIONAL GEMOLOGICAL INSTITUTE

## DIAMOND REPORT

August 14, 2025

IGI Report Number

727538493

Description

NATURAL DIAMOND

Shape and Cutting Style

ROUND BRILLIANT

Measurements

6.15 - 6.17 X 3.84 MM

### GRADING RESULTS

Carat Weight

0.90 CARAT

Color Grade

K

Clarity Grade

VS 1

Cut Grade

EXCELLENT

### ADDITIONAL GRADING INFORMATION

Polish

EXCELLENT

Symmetry

EXCELLENT

Fluorescence

NONE

Identification Features

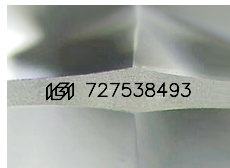
FEATHER, CLOUD, CRYSTAL

Inscription(s)

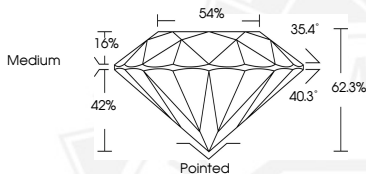
IGI 727538493

Comments: IDEAL CUT ROUND BRILLIANT

ELECTRONIC COPY



Sample Image Used



THIS DOCUMENT WAS PRODUCED WITH THE FOLLOWING SECURITY MEASURES: SPECIAL DOCUMENT PAPER, INK SCREENS, WATERMARK, BACKGROUND DESIGNS, HOLOGRAM AND OTHER SECURITY FEATURES NOT LISTED AND DO EXCEED DOCUMENT SECURITY INDUSTRY GUIDELINES.

For terms & conditions and to verify this report, please visit [www.igi.org](http://www.igi.org)



August 14, 2025

IGI Report Number 727538493

ROUND BRILLIANT

NATURAL DIAMOND

6.15 - 6.17 X 3.84 MM

Carat Weight 0.90 CARAT

Color Grade K

Clarity Grade VS 1

Cut Grade EXCELLENT

Polish EXCELLENT

Symmetry EXCELLENT

Fluorescence NONE

Inscription(s) IGI 727538493

Comments: IDEAL CUT ROUND

BRILLIANT



August 14, 2025

IGI Report Number 727538493

ROUND BRILLIANT

NATURAL DIAMOND

6.15 - 6.17 X 3.84 MM

Carat Weight 0.90 CARAT

Color Grade K

Clarity Grade VS 1

Cut Grade EXCELLENT

Polish EXCELLENT

Symmetry EXCELLENT

Fluorescence NONE

Inscription(s) IGI 727538493

Comments: IDEAL CUT ROUND

BRILLIANT