



INTERNATIONAL GEMOLOGICAL INSTITUTE

ELECTRONIC COPY

DIAMOND REPORT

August 14, 2025

IGI Report Number

727538489

Description

NATURAL DIAMOND

Shape and Cutting Style

ROUND BRILLIANT

Measurements

5.41 - 5.44 X 3.32 MM

GRADING RESULTS

Carat Weight

0.60 CARAT

Color Grade

I

Clarity Grade

SI 2

Cut Grade

EXCELLENT

ADDITIONAL GRADING INFORMATION

Polish

EXCELLENT

Symmetry

EXCELLENT

Fluorescence

NONE

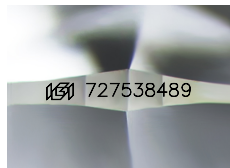
Identification Features

CRYSTAL, CLOUD, NEEDLE, FEATHER

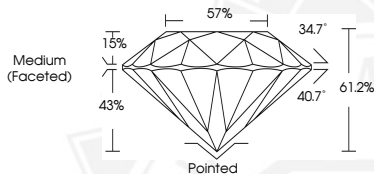
Inscription(s)

IGI 727538489

Comments: IDEAL CUT ROUND BRILLIANT



Sample Image Used



THIS DOCUMENT WAS PRODUCED WITH THE FOLLOWING SECURITY MEASURES: SPECIAL DOCUMENT PAPER, INK SCREENS, WATERMARK, BACKGROUND DESIGNS, HOLOGRAM AND OTHER SECURITY FEATURES NOT LISTED AND DO EXCEED DOCUMENT SECURITY INDUSTRY GUIDELINES.

For terms & conditions and to verify this report, please visit www.igi.org



August 14, 2025

IGI Report Number 727538489

ROUND BRILLIANT

NATURAL DIAMOND

5.41 - 5.44 X 3.32 MM

Carat Weight 0.60 CARAT

Color Grade I

Clarity Grade SI 2

Cut Grade EXCELLENT

Polish EXCELLENT

Symmetry EXCELLENT

Fluorescence NONE

Inscription(s) IGI 727538489

Comments: IDEAL CUT ROUND

BRILLIANT



August 14, 2025

IGI Report Number 727538489

ROUND BRILLIANT

NATURAL DIAMOND

5.41 - 5.44 X 3.32 MM

Carat Weight 0.60 CARAT

Color Grade I

Clarity Grade SI 2

Cut Grade EXCELLENT

Polish EXCELLENT

Symmetry EXCELLENT

Fluorescence NONE

Inscription(s) IGI 727538489

Comments: IDEAL CUT ROUND

BRILLIANT