



# INTERNATIONAL GEMOLOGICAL INSTITUTE

ELECTRONIC COPY

## DIAMOND REPORT

August 14, 2025

IGI Report Number

727538485

Description

NATURAL DIAMOND

Shape and Cutting Style

ROUND BRILLIANT

Measurements

6.13 - 6.18 X 3.87 MM

### GRADING RESULTS

Carat Weight

0.92 CARAT

Color Grade

K

Clarity Grade

VS 1

Cut Grade

EXCELLENT

### ADDITIONAL GRADING INFORMATION

Polish

EXCELLENT

Symmetry

EXCELLENT

Fluorescence

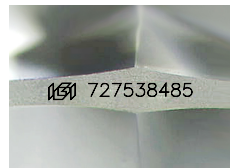
NONE

Identification Features

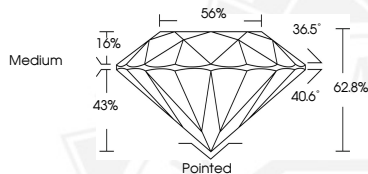
CLOUD, FEATHER, CRYSTAL

Inscription(s)

IGI 727538485



Sample Image Used



August 14, 2025

IGI Report Number 727538485

ROUND BRILLIANT

NATURAL DIAMOND

6.13 - 6.18 X 3.87 MM

Carat Weight

0.92 CARAT

Color Grade

K

Clarity Grade

VS 1

Cut Grade

EXCELLENT

Polish

EXCELLENT

Symmetry

EXCELLENT

Fluorescence

NONE

Inscription(s)

IGI 727538485



August 14, 2025

IGI Report Number 727538485

ROUND BRILLIANT

NATURAL DIAMOND

6.13 - 6.18 X 3.87 MM

Carat Weight

0.92 CARAT

Color Grade

K

Clarity Grade

VS 1

Cut Grade

EXCELLENT

Polish

EXCELLENT

Symmetry

EXCELLENT

Fluorescence

NONE

Inscription(s)

IGI 727538485



THIS DOCUMENT WAS PRODUCED WITH THE FOLLOWING SECURITY MEASURES: SPECIAL DOCUMENT PAPER, INK SCREENS, WATERMARK, BACKGROUND DESIGNS, HOLOGRAM AND OTHER SECURITY FEATURES NOT LISTED AND DO EXCEED DOCUMENT SECURITY INDUSTRY GUIDELINES.

For terms & conditions and to verify this report, please visit [www.igi.org](http://www.igi.org)