



INTERNATIONAL GEMOLOGICAL INSTITUTE

DIAMOND REPORT

August 14, 2025

IGI Report Number

727538390

Description

NATURAL DIAMOND

Shape and Cutting Style

ROUND BRILLIANT

Measurements

4.76 - 4.81 X 2.98 MM

GRADING RESULTS

Carat Weight

0.42 CARAT

Color Grade

H

Clarity Grade

VS 1

Cut Grade

EXCELLENT

ADDITIONAL GRADING INFORMATION

Polish

EXCELLENT

Symmetry

EXCELLENT

Fluorescence

VERY SLIGHT

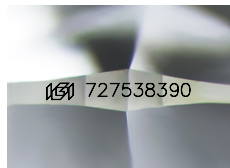
Identification Features

CRYSTAL, PINPOINT, FEATHER

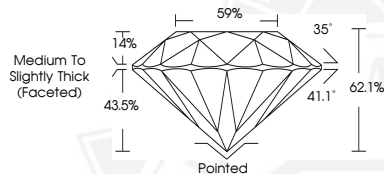
Inscription(s)

IGI 727538390

ELECTRONIC COPY



Sample Image Used



THIS DOCUMENT WAS PRODUCED WITH THE FOLLOWING SECURITY MEASURES: SPECIAL DOCUMENT PAPER, INK SCREENS, WATERMARK, BACKGROUND DESIGNS, HOLOGRAM AND OTHER SECURITY FEATURES NOT LISTED AND DO EXCEED DOCUMENT SECURITY INDUSTRY GUIDELINES.

For terms & conditions and to verify this report, please visit www.igi.org



August 14, 2025

IGI Report Number 727538390

ROUND BRILLIANT

NATURAL DIAMOND

4.76 - 4.81 X 2.98 MM

Carat Weight

0.42 CARAT

Color Grade

H

Clarity Grade

VS 1

Cut Grade

EXCELLENT

Polish

EXCELLENT

Symmetry

EXCELLENT

Fluorescence

VERY SLIGHT

Inscription(s)

IGI 727538390



August 14, 2025

IGI Report Number 727538390

ROUND BRILLIANT

NATURAL DIAMOND

4.76 - 4.81 X 2.98 MM

Carat Weight

0.42 CARAT

Color Grade

H

Clarity Grade

VS 1

Cut Grade

EXCELLENT

Polish

EXCELLENT

Symmetry

EXCELLENT

Fluorescence

VERY SLIGHT

Inscription(s)

IGI 727538390