



INTERNATIONAL GEMOLOGICAL INSTITUTE

DIAMOND REPORT

August 14, 2025

IGI Report Number

727538333

Description

NATURAL DIAMOND

Shape and Cutting Style

ROUND BRILLIANT

Measurements

4.72 - 4.74 X 2.87 MM

GRADING RESULTS

Carat Weight

0.40 CARAT

Color Grade

H

Clarity Grade

SI 1

Cut Grade

EXCELLENT

ADDITIONAL GRADING INFORMATION

Polish

EXCELLENT

Symmetry

EXCELLENT

Fluorescence

NONE

Identification Features

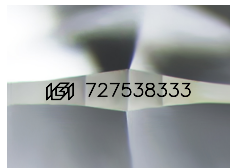
FEATHER, CLOUD, CRYSTAL

Inscription(s)

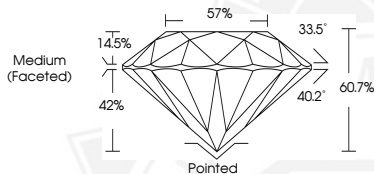
IGI 727538333

Comments: IDEAL CUT ROUND BRILLIANT

ELECTRONIC COPY



Sample Image Used



August 14, 2025

IGI Report Number 727538333

ROUND BRILLIANT

NATURAL DIAMOND

4.72 - 4.74 X 2.87 MM

Carat Weight 0.40 CARAT

Color Grade H

Clarity Grade SI 1

Cut Grade EXCELLENT

Polish EXCELLENT

Symmetry EXCELLENT

Fluorescence NONE

Inscription(s) IGI 727538333

Comments: IDEAL CUT ROUND

BRILLIANT



August 14, 2025

IGI Report Number 727538333

ROUND BRILLIANT

NATURAL DIAMOND

4.72 - 4.74 X 2.87 MM

Carat Weight 0.40 CARAT

Color Grade H

Clarity Grade SI 1

Cut Grade EXCELLENT

Polish EXCELLENT

Symmetry EXCELLENT

Fluorescence NONE

Inscription(s) IGI 727538333

Comments: IDEAL CUT ROUND

BRILLIANT



THIS DOCUMENT WAS PRODUCED WITH THE FOLLOWING SECURITY MEASURES: SPECIAL DOCUMENT PAPER, INK SCREENS, WATERMARK, BACKGROUND DESIGNS, HOLOGRAM AND OTHER SECURITY FEATURES NOT LISTED AND DO EXCEED DOCUMENT SECURITY INDUSTRY GUIDELINES.

For terms & conditions and to verify this report, please visit www.igi.org