



# INTERNATIONAL GEMOLOGICAL INSTITUTE

ELECTRONIC COPY

## DIAMOND REPORT

August 14, 2025

IGI Report Number

727538328

Description

NATURAL DIAMOND

Shape and Cutting Style

ROUND BRILLIANT

Measurements

4.71 - 4.72 X 2.91 MM

### GRADING RESULTS

Carat Weight

0.40 CARAT

Color Grade

G

Clarity Grade

SI 1

Cut Grade

EXCELLENT

### ADDITIONAL GRADING INFORMATION

Polish

EXCELLENT

Symmetry

EXCELLENT

Fluorescence

NONE

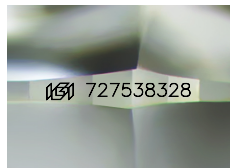
Identification Features

FEATHER, CLOUD, CRYSTAL

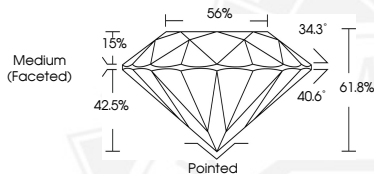
Inscription(s)

IGI 727538328

Comments: IDEAL CUT ROUND BRILLIANT



Sample Image Used



August 14, 2025

IGI Report Number 727538328

ROUND BRILLIANT

NATURAL DIAMOND

4.71 - 4.72 X 2.91 MM

Carat Weight 0.40 CARAT

Color Grade G

Clarity Grade SI 1

Cut Grade EXCELLENT

Polish EXCELLENT

Symmetry EXCELLENT

Fluorescence NONE

Inscription(s) IGI 727538328

Comments: IDEAL CUT ROUND

BRILLIANT



August 14, 2025

IGI Report Number 727538328

ROUND BRILLIANT

NATURAL DIAMOND

4.71 - 4.72 X 2.91 MM

Carat Weight 0.40 CARAT

Color Grade G

Clarity Grade SI 1

Cut Grade EXCELLENT

Polish EXCELLENT

Symmetry EXCELLENT

Fluorescence NONE

Inscription(s) IGI 727538328

Comments: IDEAL CUT ROUND

BRILLIANT



THIS DOCUMENT WAS PRODUCED WITH THE FOLLOWING SECURITY MEASURES: SPECIAL DOCUMENT PAPER, INK SCREENS, WATERMARK, BACKGROUND DESIGNS, HOLOGRAM AND OTHER SECURITY FEATURES NOT LISTED AND DO EXCEED DOCUMENT SECURITY INDUSTRY GUIDELINES.

For terms & conditions and to verify this report, please visit [www.igi.org](http://www.igi.org)