



DIAMOND REPORT

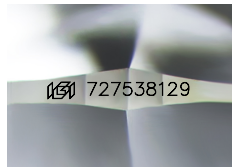
August 13, 2025
 IGI Report Number **727538129**
 Description **NATURAL DIAMOND**
 Shape and Cutting Style **ROUND BRILLIANT**
 Measurements **4.45 - 4.47 X 2.82 MM**

GRADING RESULTS

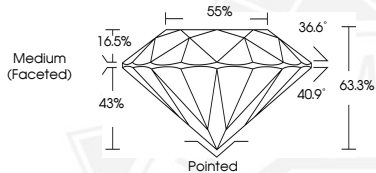
Carat Weight **0.35 CARAT**
 Color Grade **E**
 Clarity Grade **SI 1**
 Cut Grade **EXCELLENT**

ADDITIONAL GRADING INFORMATION

Polish **EXCELLENT**
 Symmetry **EXCELLENT**
 Fluorescence **VERY SLIGHT**
 Identification Features **CRYSTAL, FEATHER, CLOUD**
 Inscription(s) **(G) 727538129**



Sample Image Used



August 13, 2025
 IGI Report Number **727538129**
 ROUND BRILLIANT
 NATURAL DIAMOND
 4.45 - 4.47 X 2.82 MM
 Carat Weight **0.35 CARAT**
 Color Grade **E**
 Clarity Grade **SI 1**
 Cut Grade **EXCELLENT**
 Polish **EXCELLENT**
 Symmetry **EXCELLENT**
 Fluorescence **VERY SLIGHT**
 Inscription(s) **(G) 727538129**



August 13, 2025
 IGI Report Number **727538129**
 ROUND BRILLIANT
 NATURAL DIAMOND
 4.45 - 4.47 X 2.82 MM
 Carat Weight **0.35 CARAT**
 Color Grade **E**
 Clarity Grade **SI 1**
 Cut Grade **EXCELLENT**
 Polish **EXCELLENT**
 Symmetry **EXCELLENT**
 Fluorescence **VERY SLIGHT**
 Inscription(s) **(G) 727538129**



THIS DOCUMENT WAS PRODUCED WITH THE FOLLOWING SECURITY MEASURES: SPECIAL DOCUMENT PAPER, INK SCREENS, WATERMARK, BACKGROUND DESIGNS, HOLOGRAM AND OTHER SECURITY FEATURES NOT LISTED AND DO EXCEED DOCUMENT SECURITY INDUSTRY GUIDELINES.