



# INTERNATIONAL GEMOLOGICAL INSTITUTE

ELECTRONIC COPY

## DIAMOND REPORT

August 11, 2025

IGI Report Number

727537847

Description

NATURAL DIAMOND

Shape and Cutting Style

ROUND BRILLIANT

Measurements

5.24 - 5.27 X 3.26 MM

### GRADING RESULTS

Carat Weight

0.55 CARAT

Color Grade

J

Clarity Grade

SI 2

Cut Grade

EXCELLENT

### ADDITIONAL GRADING INFORMATION

Polish

EXCELLENT

Symmetry

EXCELLENT

Fluorescence

NONE

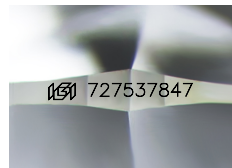
Identification Features

FEATHER, CLOUD

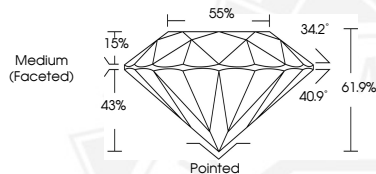
Inscription(s)

IGI 727537847

Comments: IDEAL CUT ROUND BRILLIANT



Sample Image Used



August 11, 2025

IGI Report Number 727537847

ROUND BRILLIANT

NATURAL DIAMOND

5.24 - 5.27 X 3.26 MM

Carat Weight 0.55 CARAT

Color Grade J

Clarity Grade SI 2

Cut Grade EXCELLENT

Polish EXCELLENT

Symmetry EXCELLENT

Fluorescence NONE

Inscription(s) IGI 727537847

Comments: IDEAL CUT ROUND

BRILLIANT



August 11, 2025

IGI Report Number 727537847

ROUND BRILLIANT

NATURAL DIAMOND

5.24 - 5.27 X 3.26 MM

Carat Weight 0.55 CARAT

Color Grade J

Clarity Grade SI 2

Cut Grade EXCELLENT

Polish EXCELLENT

Symmetry EXCELLENT

Fluorescence NONE

Inscription(s) IGI 727537847

Comments: IDEAL CUT ROUND

BRILLIANT



THIS DOCUMENT WAS PRODUCED WITH THE FOLLOWING SECURITY MEASURES: SPECIAL DOCUMENT PAPER, INK SCREENS, WATERMARK, BACKGROUND DESIGNS, HOLOGRAM AND OTHER SECURITY FEATURES NOT LISTED AND DO EXCEED DOCUMENT SECURITY INDUSTRY GUIDELINES.

For terms & conditions and to verify this report, please visit [www.igi.org](http://www.igi.org)