



INTERNATIONAL GEMOLOGICAL INSTITUTE

ELECTRONIC COPY

DIAMOND REPORT

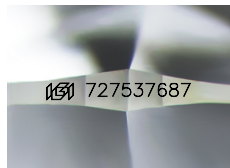
August 12, 2025
IGI Report Number **727537687**
Description **NATURAL DIAMOND**
Shape and Cutting Style **ROUND BRILLIANT**
Measurements **4.75 - 4.79 X 2.88 MM**

GRADING RESULTS

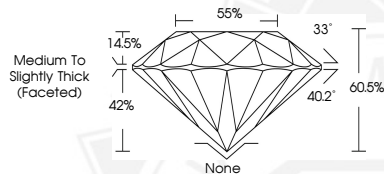
Carat Weight **0.40 CARAT**
Color Grade **I**
Clarity Grade **SI 2**
Cut Grade **EXCELLENT**

ADDITIONAL GRADING INFORMATION

Polish **EXCELLENT**
Symmetry **EXCELLENT**
Fluorescence **NONE**
Identification Features **FEATHER, CRYSTAL CLOUD**
Inscription(s) **IGI 727537687**
Comments: IDEAL CUT ROUND BRILLIANT



Sample Image Used



August 12, 2025
IGI Report Number **727537687**
ROUND BRILLIANT
NATURAL DIAMOND
4.75 - 4.79 X 2.88 MM
Carat Weight **0.40 CARAT**
Color Grade **I**
Clarity Grade **SI 2**
Cut Grade **EXCELLENT**
Polish **EXCELLENT**
Symmetry **EXCELLENT**
Fluorescence **NONE**
Inscription(s) **IGI 727537687**
Comments: IDEAL CUT ROUND BRILLIANT



August 12, 2025
IGI Report Number **727537687**
ROUND BRILLIANT
NATURAL DIAMOND
4.75 - 4.79 X 2.88 MM
Carat Weight **0.40 CARAT**
Color Grade **I**
Clarity Grade **SI 2**
Cut Grade **EXCELLENT**
Polish **EXCELLENT**
Symmetry **EXCELLENT**
Fluorescence **NONE**
Inscription(s) **IGI 727537687**
Comments: IDEAL CUT ROUND BRILLIANT



THIS DOCUMENT WAS PRODUCED WITH THE FOLLOWING SECURITY MEASURES: SPECIAL DOCUMENT PAPER, INK SCREENS, WATERMARK, BACKGROUND DESIGNS, HOLOGRAM AND OTHER SECURITY FEATURES NOT LISTED AND DO EXCEED DOCUMENT SECURITY INDUSTRY GUIDELINES.

For terms & conditions and to verify this report, please visit www.igi.org