



# INTERNATIONAL GEMOLOGICAL INSTITUTE

ELECTRONIC COPY

## DIAMOND REPORT

August 29, 2025

IGI Report Number

727536731

Description

NATURAL DIAMOND

Shape and Cutting Style

ROUND BRILLIANT

Measurements

5.62 - 5.66 X 3.50 MM

### GRADING RESULTS

Carat Weight

0.70 CARAT

Color Grade

H

Clarity Grade

VVS 2

Cut Grade

EXCELLENT

### ADDITIONAL GRADING INFORMATION

Polish

EXCELLENT

Symmetry

EXCELLENT

Fluorescence

NONE

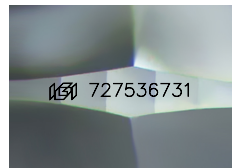
Identification Features

CLOUD, NEEDLE

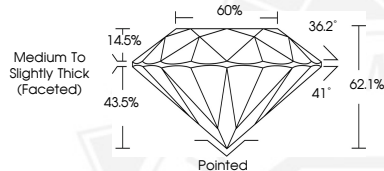
Inscription(s)

727536731

Comments: IDEAL CUT ROUND BRILLIANT



Sample Image Used



August 29, 2025

IGI Report Number 727536731

ROUND BRILLIANT

NATURAL DIAMOND

5.62 - 5.66 X 3.50 MM

Carat Weight 0.70 CARAT

Color Grade H

Clarity Grade VVS 2

Cut Grade EXCELLENT

Polish EXCELLENT

Symmetry EXCELLENT

Fluorescence NONE

Inscription(s) 727536731

Comments: IDEAL CUT ROUND

BRILLIANT



August 29, 2025

IGI Report Number 727536731

ROUND BRILLIANT

NATURAL DIAMOND

5.62 - 5.66 X 3.50 MM

Carat Weight 0.70 CARAT

Color Grade H

Clarity Grade VVS 2

Cut Grade EXCELLENT

Polish EXCELLENT

Symmetry EXCELLENT

Fluorescence NONE

Inscription(s) 727536731

Comments: IDEAL CUT ROUND

BRILLIANT



THIS DOCUMENT WAS PRODUCED WITH THE FOLLOWING SECURITY MEASURES: SPECIAL DOCUMENT PAPER, INK SCREENS, WATERMARK, BACKGROUND DESIGNS, HOLOGRAM AND OTHER SECURITY FEATURES NOT LISTED AND DO EXCEED DOCUMENT SECURITY INDUSTRY GUIDELINES.

For terms & conditions and to verify this report, please visit [www.igi.org](http://www.igi.org)