



**ELECTRONIC COPY**

## DIAMOND REPORT

August 25, 2025	
IGI Report Number	727535628
Description	NATURAL DIAMOND
Shape and Cutting Style	ROUND BRILLIANT
Measurements	5.79 - 5.82 X 3.62 MM

## GRADING RESULTS

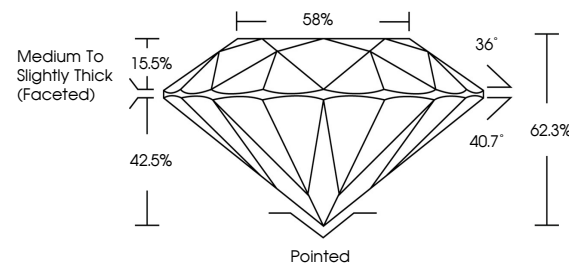
Carat Weight	0.76 CARAT
Color Grade	G
Clarity Grade	INTERNALLY FLAWLESS
Cut Grade	EXCELLENT

### ADDITIONAL GRADING INFORMATION

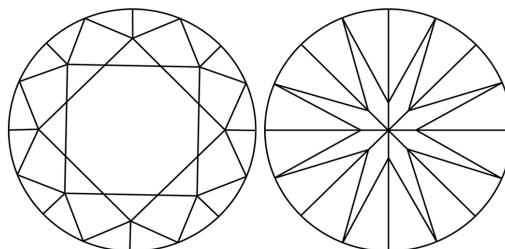
Polish	EXCELLENT
Symmetry	EXCELLENT
Fluorescence	NONE
Inscription(s)	 727535628
Comments: IDEAL CUT ROUND BRILLIANT	

727535628  
Report verification at [igi.org](http://igi.org)

## PROPORTIONS

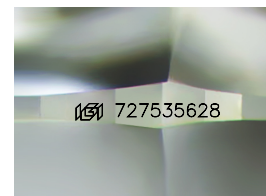


## CLARITY CHARACTERISTICS



## KEY TO SYMBOLS

Red symbols indicate internal characteristics.  
Green symbols indicate external characteristics.



Sample Image Used

**COLOR**

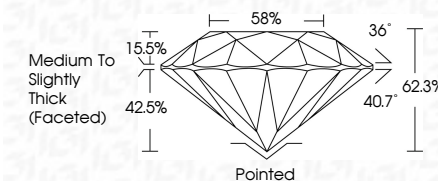
D - F	G - J	K - M	N - R	S - Z	FANCY
Colorless	Near Colorless	Slightly Tinted	Very Light Color	Light Color	

## CLARITY

IF	VVS <sup>1-2</sup>	VS <sup>1-2</sup>	SI <sup>1-2</sup>	I <sup>1-3</sup>
Internally Flawless	Very Very Slightly Included	Very Slightly Included	Slightly Included	Included



August 25, 2025	
IGI Report Number	727535628
Description	NATURAL DIAMOND
Shape and Cutting Style	ROUND BRILLIANT
Measurements	5.79 - 5.82 X 3.62 MM
<b>GRADING RESULTS</b>	
Carat Weight	0.76 CARAT
Color Grade	G
Clarity Grade	INTERNALLY FLAWLESS
Cut Grade	EXCELLENT



### ADDITIONAL GRADING INFORMATION

Polish	EXCELLENT
Symmetry	EXCELLENT
Fluorescence	NONE
Inscription(s)	<del>(G)</del> 727535628
Comments: IDEAL CUT ROUND BRILLIANT	



© IGI 2020, International Gemological Institute

FD - 10 20



THIS DOCUMENT WAS PRODUCED WITH THE FOLLOWING SECURITY MEASURES: SPECIAL DOCUMENT PAPER, INK SCREENS, WATERMARK, BACKGROUND DESIGNS, HOLOGRAM AND OTHER SECURITY FEATURES NOT LISTED AND DO EXCEED DOCUMENT SECURITY INDUSTRY GUIDELINES

**www.igi.org**

