



INTERNATIONAL GEMOLOGICAL INSTITUTE

DIAMOND REPORT

August 20, 2025
IGI Report Number
Description
Shape and Cutting Style
Measurements

727535421
NATURAL DIAMOND
ROUND BRILLIANT
4.70 - 4.75 X 2.88 MM

GRADING RESULTS

Carat Weight
Color Grade
Clarity Grade
Cut Grade

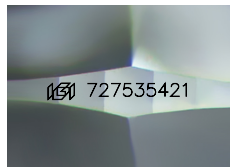
0.40 CARAT
D
VS 1
EXCELLENT

ADDITIONAL GRADING INFORMATION

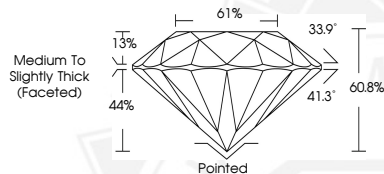
Polish
Symmetry
Fluorescence
Identification Features
Inscription(s)

EXCELLENT
EXCELLENT
VERY SLIGHT
FEATHER, CLOUD
727535421

ELECTRONIC COPY



Sample Image Used



August 20, 2025
IGI Report Number 727535421
ROUND BRILLIANT
NATURAL DIAMOND
4.70 - 4.75 X 2.88 MM
Carat Weight 0.40 CARAT
Color Grade D
Clarity Grade VS 1
Cut Grade EXCELLENT
Polish EXCELLENT
Symmetry EXCELLENT
Fluorescence VERY SLIGHT
Inscription(s) 727535421



August 20, 2025
IGI Report Number 727535421
ROUND BRILLIANT
NATURAL DIAMOND
4.70 - 4.75 X 2.88 MM
Carat Weight 0.40 CARAT
Color Grade D
Clarity Grade VS 1
Cut Grade EXCELLENT
Polish EXCELLENT
Symmetry EXCELLENT
Fluorescence VERY SLIGHT
Inscription(s) 727535421



THIS DOCUMENT WAS PRODUCED WITH THE FOLLOWING SECURITY MEASURES: SPECIAL DOCUMENT PAPER, INK SCREENS, WATERMARK, BACKGROUND DESIGNS, HOLOGRAM AND OTHER SECURITY FEATURES NOT LISTED AND DO EXCEED DOCUMENT SECURITY INDUSTRY GUIDELINES.

For terms & conditions and to verify this report, please visit www.igi.org