



ELECTRONIC COPY

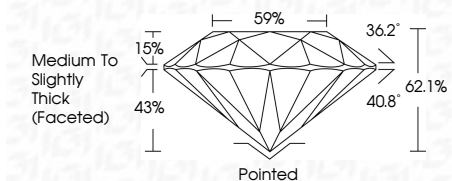
727511571
Report verification at igi.org



March 24, 2026
IGI Report Number **727511571**
Description **NATURAL DIAMOND**
Shape and Cutting Style **ROUND BRILLIANT**
Measurements **6.34 - 6.39 X 3.96 MM**

GRADING RESULTS

Carat Weight **1.01 CARAT**
Color Grade **G**
Clarity Grade **VVS 2**
Cut Grade **EXCELLENT**



ADDITIONAL GRADING INFORMATION

Polish **EXCELLENT**
Symmetry **EXCELLENT**
Fluorescence **NONE**
Inscription(s) **IGI 727511571**
Comments: IDEAL CUT ROUND BRILLIANT



IGI

March 24, 2026
IGI Report No 727511571
ROUND BRILLIANT
6.34 - 6.39 X 3.96 MM
1.01 CARAT
G
VVS 2
EXCELLENT
62.1%
59%
Medium To Slightly Thick (Faceted)
Pointed
EXCELLENT
EXCELLENT
NONE
IGI 727511571
Comments: IDEAL CUT ROUND BRILLIANT

DIAMOND REPORT

March 24, 2026
IGI Report Number **727511571**
Description **NATURAL DIAMOND**
Shape and Cutting Style **ROUND BRILLIANT**
Measurements **6.34 - 6.39 X 3.96 MM**

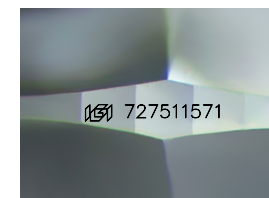
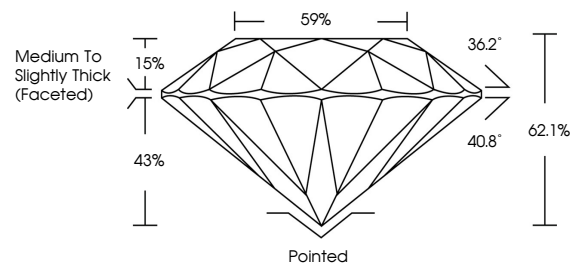
GRADING RESULTS

Carat Weight **1.01 CARAT**
Color Grade **G**
Clarity Grade **VVS 2**
Cut Grade **EXCELLENT**

ADDITIONAL GRADING INFORMATION

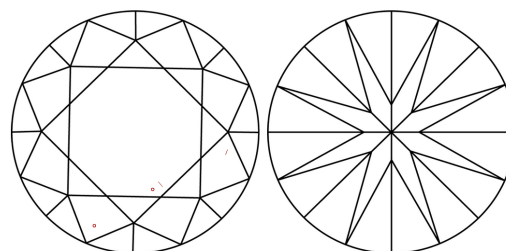
Polish **EXCELLENT**
Symmetry **EXCELLENT**
Fluorescence **NONE**
Inscription(s) **IGI 727511571**
Comments: IDEAL CUT ROUND BRILLIANT

PROPORTIONS



Sample Image Used

CLARITY CHARACTERISTICS



KEY TO SYMBOLS

Red symbols indicate internal characteristics.
Green symbols indicate external characteristics.

COLOR

D - F	G - J	K - M	N - R	S - Z	FANCY
Colorless	Near Colorless	Slightly Tinted	Very Light Color	Light Color	

CLARITY

FL	IF	VVS 1-2	VS 1-2	SI 1-2	I 1-3
Flawless	Internally Flawless	Very Very Slightly Included	Very Slightly Included	Slightly Included	Included

