



ELECTRONIC COPY

727511494
Report verification at igi.org



February 20, 2026
IGI Report Number **727511494**
Description **NATURAL DIAMOND**
Shape and Cutting Style **ROUND BRILLIANT**
Measurements **7.56 - 7.61 X 4.74 MM**
GRADING RESULTS
Carat Weight **1.70 CARAT**
Color Grade **H**
Clarity Grade **INTERNALLY FLAWLESS**
Cut Grade **EXCELLENT**

February 20, 2026
IGI Report Number **727511494**
Description **NATURAL DIAMOND**
Shape and Cutting Style **ROUND BRILLIANT**
Measurements **7.56 - 7.61 X 4.74 MM**

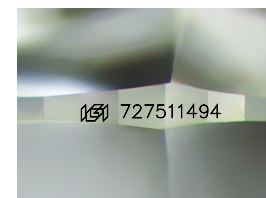
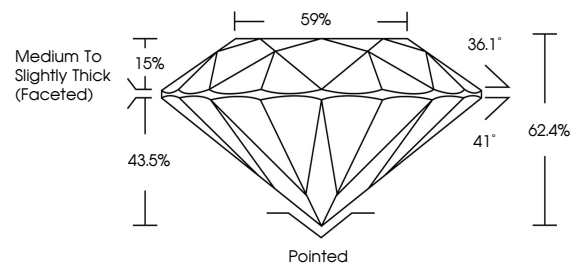
GRADING RESULTS

Carat Weight **1.70 CARAT**
Color Grade **H**
Clarity Grade **INTERNALLY FLAWLESS**
Cut Grade **EXCELLENT**

ADDITIONAL GRADING INFORMATION

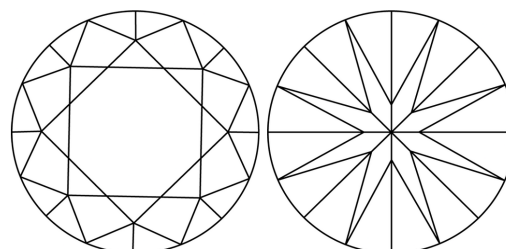
Polish **EXCELLENT**
Symmetry **EXCELLENT**
Fluorescence **NONE**
Inscription(s) **727511494**
Comments: IDEAL CUT ROUND BRILLIANT

PROPORTIONS



Sample Image Used

CLARITY CHARACTERISTICS



KEY TO SYMBOLS

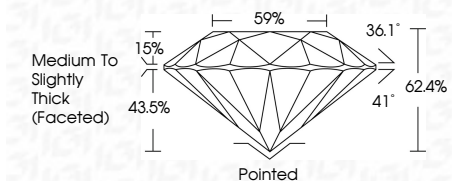
Red symbols indicate internal characteristics.
Green symbols indicate external characteristics.

COLOR

D - F	G - J	K - M	N - R	S - Z	FANCY
Colorless	Near Colorless	Slightly Tinted	Very Light Color	Light Color	

CLARITY

FL	IF	VVS ¹⁻²	VS ¹⁻²	SI ¹⁻²	I ¹⁻³
Flawless	Internally Flawless	Very Very Slightly Included	Very Slightly Included	Slightly Included	Included



ADDITIONAL GRADING INFORMATION

Polish **EXCELLENT**
Symmetry **EXCELLENT**
Fluorescence **NONE**
Inscription(s) **727511494**
Comments: IDEAL CUT ROUND BRILLIANT



IGI



February 20, 2026
IGI Report No 727511494
ROUND BRILLIANT
1.70 CARAT
Color Grade **H**
Clarity Grade **IF**
Depth **EXCELLENT**
Table **62.4%**
Girdle **59%**
Medium To Slightly Thick (Faceted)
Culet **Pointed**
Polish **EXCELLENT**
Symmetry **EXCELLENT**
Fluorescence **NONE**
Inscriptions(s) **727511494**
Comments: **IDEAL CUT ROUND BRILLIANT**