



**ELECTRONIC COPY**

## DIAMOND REPORT

October 17, 2025	
IGI Report Number	727511361
Description	NATURAL DIAMOND
Shape and Cutting Style	ROUND BRILLIANT
Measurements	5.94 - 6.05 X 4.21 MM

## GRADING RESULTS

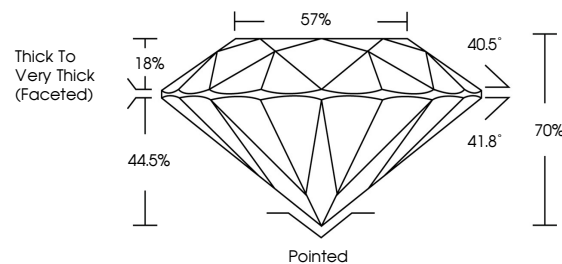
Carat Weight	1.01 CARAT
Color Grade	H
Clarity Grade	VVS 2
Cut Grade	FAIR

### ADDITIONAL GRADING INFORMATION

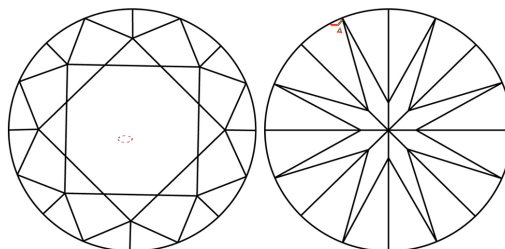
Polish	VERY GOOD
Symmetry	GOOD
Fluorescence	NONE
Inscription(s)	131 727511361

727511361  
Report verification at [igi.org](http://igi.org)

## PROPORTIONS

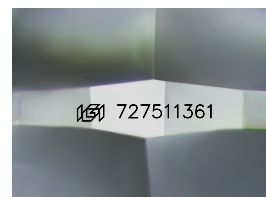


## CLARITY CHARACTERISTICS



## KEY TO SYMBOLS

Red symbols indicate internal characteristics.  
Green symbols indicate external characteristics.



Sample Image Used

## COLOR

D - F	G - J	K - M	N - R	S - Z	FANCY
Colorless	Near Colorless	Slightly Tinted	Very Light Color	Light Color	

## CLARITY

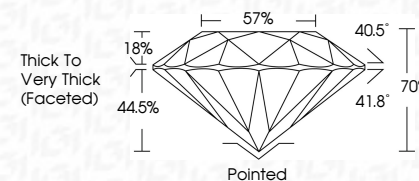
IF	VVS <sup>1-2</sup>	VS <sup>1-2</sup>	SI <sup>1-2</sup>	I <sup>1-3</sup>
Internally Flawless	Very Very Slightly Included	Very Slightly Included	Slightly Included	Included



October 17, 2025	
IGI Report Number	727511361
Description	NATURAL DIAMOND
Shape and Cutting Style	ROUND BRILLIANT
Measurements	5.94 - 6.05 X 4.21 MM

## GRADING RESULTS

Carat Weight	1.01 CARAT
Color Grade	H
Clarity Grade	VVS 2
Cut Grade	FAIR



### ADDITIONAL GRADING INFORMATION

Polish	VERY GOOD
Symmetry	GOOD
Fluorescence	NONE
Inscription(s)	(15) 727511361



IG



© IGI 2020, International Gemological Institute

FD - 10 20

**www.igi.org**



THIS DOCUMENT WAS PRODUCED WITH THE FOLLOWING SECURITY MEASURES: SPECIAL DOCUMENT PAPER, INK SCREENS, WATERMARK, BACKGROUND DESIGNS, HOLOGRAM AND OTHER SECURITY FEATURES NOT LISTED AND DO EXCEED DOCUMENT SECURITY INDUSTRY GUIDELINE

October 17, 2025 GI Report No Z72611861		<b>ROUND BRILLIANT</b>
	Carat Weight	1.01 CARAT
	Color Grade	H
	Clarity Grade	VVS 2
	Cut Grade	FAIR
	Depth	70%
	Table	57%
	Girdle	Thick to Very Thick (Faceted)
	Culet	Pointed
	Polish	VERY GOOD
	Symmetry	GOOD
	Fluorescence	NONE
		Lab # Z72611861-9