



December 29, 2025

IGI Report Number 726529056

ROUND BRILLIANT

NATURAL DIAMOND

6.13 - 6.18 X 3.86 MM

Carat Weight **0.90 CARAT**  
 Color Grade **K**  
 Clarity Grade **VS 1**  
 Cut Grade **EXCELLENT**  
 Polish **EXCELLENT**  
 Symmetry **EXCELLENT**  
 Fluorescence **NONE**  
 Inscription(s) **IGI 726529056**

**DIAMOND REPORT**

December 29, 2025

IGI Report Number

**726529056**

Description

**NATURAL DIAMOND**

Shape and Cutting Style

**ROUND BRILLIANT**

Measurements

**6.13 - 6.18 X 3.86 MM**

**GRADING RESULTS**

Carat Weight

**0.90 CARAT**

Color Grade

**K**

Clarity Grade

**VS 1**

Cut Grade

**EXCELLENT**

**ADDITIONAL GRADING INFORMATION**

Polish

**EXCELLENT**

Symmetry

**EXCELLENT**

Fluorescence

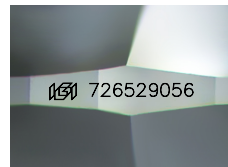
**NONE**

Identification Features

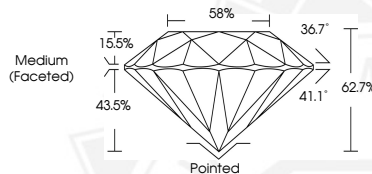
**CLOUD**

Inscription(s)

**IGI 726529056**



Sample Image Used



December 29, 2025

IGI Report Number 726529056

ROUND BRILLIANT

NATURAL DIAMOND

6.13 - 6.18 X 3.86 MM

Carat Weight **0.90 CARAT**  
 Color Grade **K**  
 Clarity Grade **VS 1**  
 Cut Grade **EXCELLENT**  
 Polish **EXCELLENT**  
 Symmetry **EXCELLENT**  
 Fluorescence **NONE**  
 Inscription(s) **IGI 726529056**



THIS DOCUMENT WAS PRODUCED WITH THE FOLLOWING SECURITY MEASURES: SPECIAL DOCUMENT PAPER, INK SCREENS, WATERMARK, BACKGROUND DESIGNS, HOLOGRAM AND OTHER SECURITY FEATURES NOT LISTED AND DO EXCEED DOCUMENT SECURITY INDUSTRY GUIDELINES.