



ELECTRONIC COPY

726527013
Report verification at igi.org

DIAMOND REPORT

August 7, 2025
IGI Report Number **726527013**
Description **NATURAL DIAMOND**
Shape and Cutting Style **EMERALD CUT**
Measurements **6.89 X 5.06 X 3.15 MM**

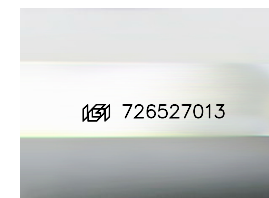
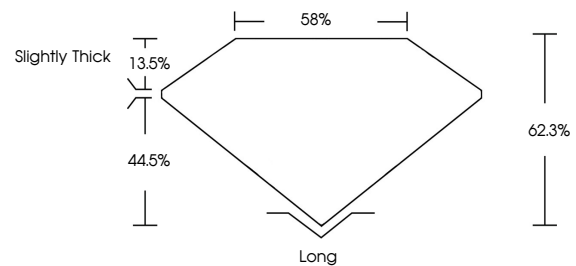
GRADING RESULTS

Carat Weight **1.09 CARAT**
Color Grade **I**
Clarity Grade **VVS 2**
Cut Grade **VERY GOOD**

ADDITIONAL GRADING INFORMATION

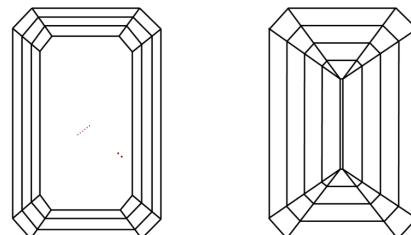
Polish **EXCELLENT**
Symmetry **EXCELLENT**
Fluorescence **NONE**
Inscription(s) **726527013**

PROPORTIONS



Sample Image Used

CLARITY CHARACTERISTICS



KEY TO SYMBOLS

Red symbols indicate internal characteristics.
Green symbols indicate external characteristics.

COLOR

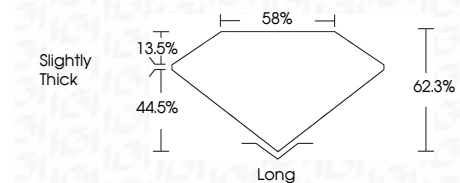
D - F	G - J	K - M	N - R	S - Z	FANCY
Colorless	Near Colorless	Slightly Tinted	Very Light Color	Light Color	

CLARITY

IF	VVS ¹⁻²	VS ¹⁻²	SI ¹⁻²	I ¹⁻³
Internally Flawless	Very Very Slightly Included	Very Slightly Included	Slightly Included	Included



August 7, 2025
IGI Report Number **726527013**
Description **NATURAL DIAMOND**
Shape and Cutting Style **EMERALD CUT**
Measurements **6.89 X 5.06 X 3.15 MM**
GRADING RESULTS
Carat Weight **1.09 CARAT**
Color Grade **I**
Clarity Grade **VVS 2**
Cut Grade **VERY GOOD**



ADDITIONAL GRADING INFORMATION

Polish **EXCELLENT**
Symmetry **EXCELLENT**
Fluorescence **NONE**
Inscription(s) **726527013**



IGI



August 7, 2025
IGI Report No 726527013
EMERALD CUT
6.89 X 5.06 X 3.15 MM
1.09 CARAT
I
VVS 2
VERY GOOD
62.3%
58%
Slightly Thick
Long
EXCELLENT
EXCELLENT
NONE
726527013