



ELECTRONIC COPY

724522492
Report verification at igi.org



September 18, 2025

IGI Report Number **724522492**

Description **NATURAL DIAMOND**

Shape and Cutting Style **HEPTAGONAL MODIFIED STEP CUT**

Measurements **6.44 X 7.08 X 2.59 MM**

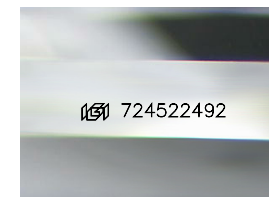
GRADING RESULTS

Carat Weight **1.00 CARAT**

Color Grade **J**

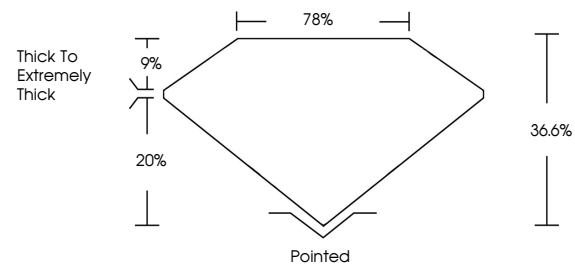
Clarity Grade **INTERNALLY FLAWLESS**

Cut Grade **GOOD**

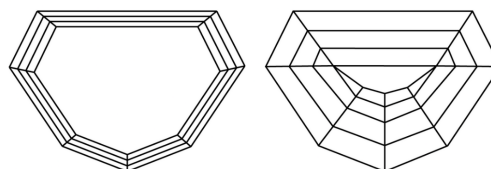


Sample Image Used

PROPORTIONS



CLARITY CHARACTERISTICS



KEY TO SYMBOLS

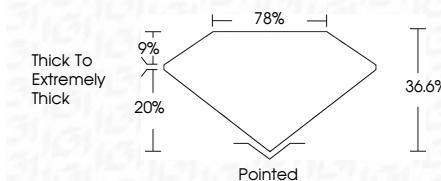
Red symbols indicate internal characteristics.
Green symbols indicate external characteristics.

COLOR

D - F	G - J	K - M	N - R	S - Z	FANCY
Colorless	Near Colorless	Slightly Tinted	Very Light Color	Light Color	

CLARITY

IF	VVS ¹⁻²	VS ¹⁻²	SI ¹⁻²	I ¹⁻³
Internally Flawless	Very Very Slightly Included	Very Slightly Included	Slightly Included	Included



ADDITIONAL GRADING INFORMATION

Polish **EXCELLENT**

Symmetry **VERY GOOD**

Fluorescence **NONE**

Inscription(s) **(IGI) 724522492**



IGI



September 18, 2025
IGI Report No 724522492
HEPTAGONAL MODIFIED STEP CUT

6.44 X 7.08 X 2.59 MM

1.00 CARAT
Color Grade **J**
Clarity Grade **IF**
Depth **GOOD**
Table **36.6%**
Crown **9%**
Pavilion **78%**
Girdle **Thick To Extremely Thick**

Pointed
Polish **EXCELLENT**
Symmetry **VERY GOOD**
Fluorescence **NONE**
Inscription(s) **(IGI) 724522492**