



**ELECTRONIC COPY**

724522363  
Report verification at igi.org



September 5, 2025  
IGI Report Number **724522363**  
Description **NATURAL DIAMOND**  
Shape and Cutting Style **EMERALD CUT**  
Measurements **9.49 X 6.90 X 4.79 MM**  
**GRADING RESULTS**  
Carat Weight **3.17 CARATS**  
Color Grade **L**  
Clarity Grade **INTERNALLY FLAWLESS**  
Cut Grade **VERY GOOD**

**DIAMOND REPORT**

September 5, 2025  
IGI Report Number **724522363**  
Description **NATURAL DIAMOND**  
Shape and Cutting Style **EMERALD CUT**  
Measurements **9.49 X 6.90 X 4.79 MM**

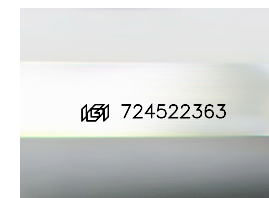
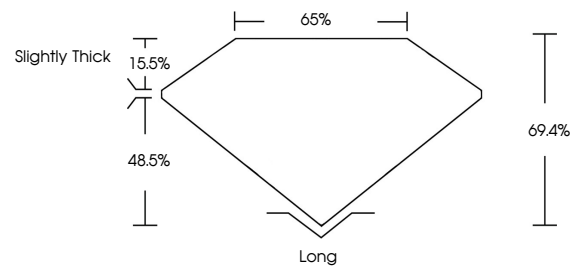
**GRADING RESULTS**

Carat Weight **3.17 CARATS**  
Color Grade **L**  
Clarity Grade **INTERNALLY FLAWLESS**  
Cut Grade **VERY GOOD**

**ADDITIONAL GRADING INFORMATION**

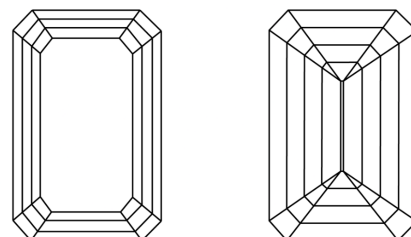
Polish **EXCELLENT**  
Symmetry **EXCELLENT**  
Fluorescence **NONE**  
Inscription(s) **724522363**

**PROPORTIONS**



Sample Image Used

**CLARITY CHARACTERISTICS**



**KEY TO SYMBOLS**

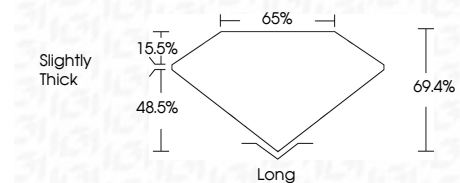
Red symbols indicate internal characteristics.  
Green symbols indicate external characteristics.

**COLOR**

D - F	G - J	K - M	N - R	S - Z	FANCY
Colorless	Near Colorless	Slightly Tinted	Very Light Color	Light Color	

**CLARITY**

IF	VVS <sup>1-2</sup>	VS <sup>1-2</sup>	SI <sup>1-2</sup>	I <sup>1-3</sup>
Internally Flawless	Very Very Slightly Included	Very Slightly Included	Slightly Included	Included



**ADDITIONAL GRADING INFORMATION**

Polish **EXCELLENT**  
Symmetry **EXCELLENT**  
Fluorescence **NONE**  
Inscription(s) **724522363**



**IGI**



September 5, 2025  
IGI Report No 724522363  
**EMERALD CUT**  
9.49 X 6.90 X 4.79 MM  
3.17 CARATS  
L  
VERY GOOD  
69.4%  
65%  
Slightly Thick  
Long  
EXCELLENT  
EXCELLENT  
NONE  
724522363