



# INTERNATIONAL GEMOLOGICAL INSTITUTE

ELECTRONIC COPY

## DIAMOND REPORT

December 4, 2025

IGI Report Number

724504774

Description

NATURAL DIAMOND

Shape and Cutting Style

ROUND BRILLIANT

Measurements

6.13 - 6.18 X 3.83 MM

## GRADING RESULTS

Carat Weight

0.90 CARAT

Color Grade

G

Clarity Grade

VVS 2

Cut Grade

EXCELLENT

## ADDITIONAL GRADING INFORMATION

Polish

EXCELLENT

Symmetry

EXCELLENT

Fluorescence

NONE

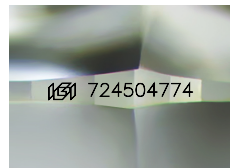
Identification Features

CLOUD, PINPOINT, FEATHER

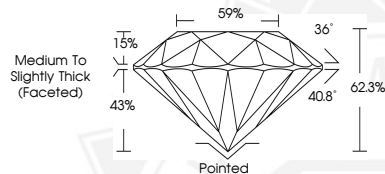
Inscription(s)

IGI 724504774

Comments: IDEAL CUT ROUND BRILLIANT



Sample Image Used



December 4, 2025

IGI Report Number 724504774

ROUND BRILLIANT

NATURAL DIAMOND

6.13 - 6.18 X 3.83 MM

Carat Weight 0.90 CARAT

Color Grade G

Clarity Grade VVS 2

Cut Grade EXCELLENT

Polish EXCELLENT

Symmetry EXCELLENT

Fluorescence NONE

Inscription(s) IGI 724504774

Comments: IDEAL CUT ROUND

BRILLIANT



December 4, 2025

IGI Report Number 724504774

ROUND BRILLIANT

NATURAL DIAMOND

6.13 - 6.18 X 3.83 MM

Carat Weight 0.90 CARAT

Color Grade G

Clarity Grade VVS 2

Cut Grade EXCELLENT

Polish EXCELLENT

Symmetry EXCELLENT

Fluorescence NONE

Inscription(s) IGI 724504774

Comments: IDEAL CUT ROUND

BRILLIANT



THIS DOCUMENT WAS PRODUCED WITH THE FOLLOWING SECURITY MEASURES: SPECIAL DOCUMENT PAPER, INK SCREENS, WATERMARK, BACKGROUND DESIGNS, HOLOGRAM AND OTHER SECURITY FEATURES NOT LISTED AND DO EXCEED DOCUMENT SECURITY INDUSTRY GUIDELINES.

For terms & conditions and to verify this report, please visit [www.igi.org](http://www.igi.org)