



**ELECTRONIC COPY**

723578254  
Report verification at [igi.org](http://igi.org)



August 8, 2025  
IGI Report Number **723578254**  
Description **NATURAL DIAMOND**  
Shape and Cutting Style **OLD EUROPEAN CUT**  
Measurements **6.33 - 6.41 X 4.10 MM**  
**GRADING RESULTS**  
Carat Weight **1.11 CARAT**  
Color Grade **NATURAL FANCY LIGHT BROWN**  
Clarity Grade **VVS 2**

August 8, 2025  
IGI Report Number **723578254**  
Description **NATURAL DIAMOND**  
Shape and Cutting Style **OLD EUROPEAN CUT**  
Measurements **6.33 - 6.41 X 4.10 MM**

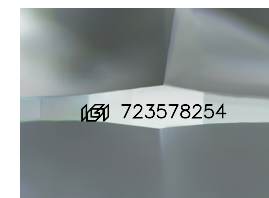
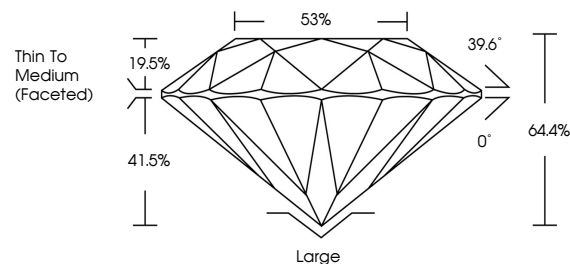
**GRADING RESULTS**

Carat Weight **1.11 CARAT**  
Color Grade **NATURAL FANCY LIGHT BROWN**  
Clarity Grade **VVS 2**

**ADDITIONAL GRADING INFORMATION**

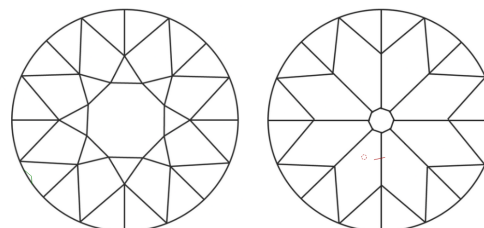
Polish **VERY GOOD**  
Symmetry **VERY GOOD**  
Fluorescence **NONE**  
Inscription(s) **723578254**

**PROPORTIONS**



Sample Image Used

**CLARITY CHARACTERISTICS**



**KEY TO SYMBOLS**

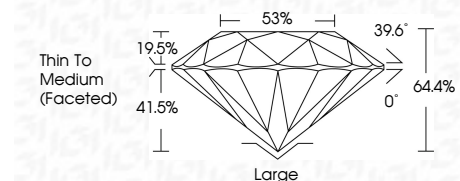
Red symbols indicate internal characteristics.  
Green symbols indicate external characteristics.

**COLOR**

D - F	G - J	K - M	N - R	S - Z	FANCY
Colorless	Near Colorless	Slightly Tinted	Very Light Color	Light Color	

**CLARITY**

IF	VVS <sup>1-2</sup>	VS <sup>1-2</sup>	SI <sup>1-2</sup>	I <sup>1-3</sup>
Internally Flawless	Very Very Slightly Included	Very Slightly Included	Slightly Included	Included



**ADDITIONAL GRADING INFORMATION**

Polish **VERY GOOD**  
Symmetry **VERY GOOD**  
Fluorescence **NONE**  
Inscription(s) **723578254**



**IGI**



August 8, 2025  
IGI Report No 723578254  
**OLD EUROPEAN CUT**  
1.11 CARAT  
Carat Weight  
Color Grade **NATURAL FANCY LIGHT BROWN**  
Clarity Grade **VVS 2**  
Depth **64.4%**  
Table **53%**  
Girdle  
Thin To Medium (Faceted)  
Culet **Large**  
Polish **VERY GOOD**  
Symmetry **VERY GOOD**  
Fluorescence **NONE**  
Inscription(s) **723578254**