



ELECTRONIC COPY

723573367
Report verification at igi.org



August 19, 2025
IGI Report Number **723573367**
Description **NATURAL DIAMOND**
Shape and Cutting Style **ROUND BRILLIANT**
Measurements **14.01 - 14.12 X 8.46 MM**
GRADING RESULTS
Carat Weight **10.06 CARATS**
Color Grade **J**
Clarity Grade **VS 1**
Cut Grade **EXCELLENT**

DIAMOND REPORT

August 19, 2025
IGI Report Number **723573367**
Description **NATURAL DIAMOND**
Shape and Cutting Style **ROUND BRILLIANT**
Measurements **14.01 - 14.12 X 8.46 MM**

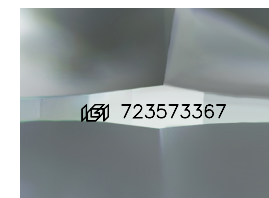
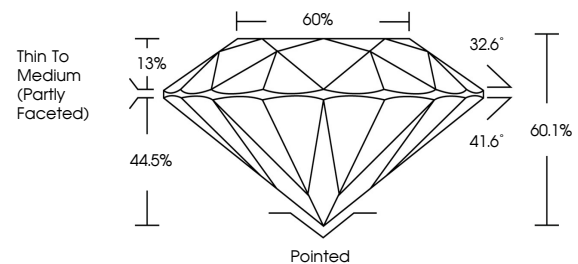
GRADING RESULTS

Carat Weight **10.06 CARATS**
Color Grade **J**
Clarity Grade **VS 1**
Cut Grade **EXCELLENT**

ADDITIONAL GRADING INFORMATION

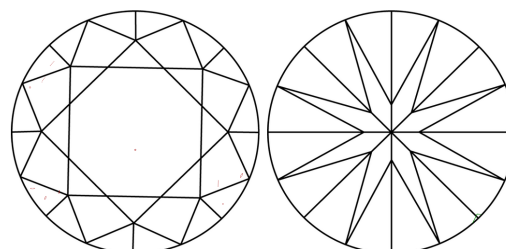
Polish **EXCELLENT**
Symmetry **EXCELLENT**
Fluorescence **NONE**
Inscription(s) **723573367**

PROPORTIONS



Sample Image Used

CLARITY CHARACTERISTICS



KEY TO SYMBOLS

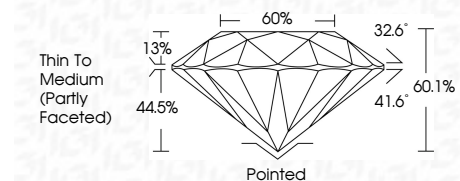
Red symbols indicate internal characteristics.
Green symbols indicate external characteristics.

COLOR

D - F	G - J	K - M	N - R	S - Z	FANCY
Colorless	Near Colorless	Slightly Tinted	Very Light Color	Light Color	

CLARITY

IF	VVS ¹⁻²	VS ¹⁻²	SI ¹⁻²	I ¹⁻³
Internally Flawless	Very Very Slightly Included	Very Slightly Included	Slightly Included	Included



ADDITIONAL GRADING INFORMATION

Polish **EXCELLENT**
Symmetry **EXCELLENT**
Fluorescence **NONE**
Inscription(s) **723573367**



IGI



August 19, 2025
IGI Report No 723573367
ROUND BRILLIANT
14.01 - 14.12 X 8.46 MM
10.06 CARATS
J
VS 1
EXCELLENT
60.1%
60%
Thin To Medium (Partly Faceted)
Pointed
EXCELLENT
EXCELLENT
NONE
NONE
723573367