



**ELECTRONIC COPY**

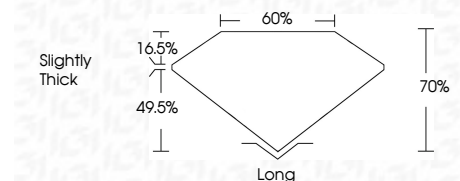
723525393  
Report verification at [igi.org](http://igi.org)



August 14, 2025  
IGI Report Number **723525393**  
Description **NATURAL DIAMOND**  
Shape and Cutting Style **EMERALD CUT**  
Measurements **7.93 X 5.70 X 3.99 MM**

**GRADING RESULTS**

Carat Weight **1.74 CARAT**  
Color Grade **M**  
Clarity Grade **VS 1**  
Cut Grade **VERY GOOD**



**ADDITIONAL GRADING INFORMATION**

Polish **EXCELLENT**  
Symmetry **EXCELLENT**  
Fluorescence **VERY SLIGHT**  
Inscription(s) **IGI 723525393**



**IGI**

August 14, 2025  
IGI Report No 723525393  
**EMERALD CUT**  
7.93 X 5.70 X 3.99 MM  
1.74 CARAT  
M  
VS 1  
VERY GOOD  
70%  
60%  
Slightly Thick  
Long  
EXCELLENT  
EXCELLENT  
VERY SLIGHT  
IGI 723525393

**DIAMOND REPORT**

August 14, 2025  
IGI Report Number **723525393**  
Description **NATURAL DIAMOND**  
Shape and Cutting Style **EMERALD CUT**  
Measurements **7.93 X 5.70 X 3.99 MM**

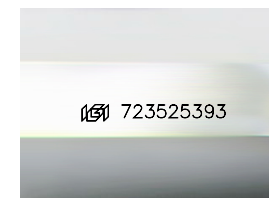
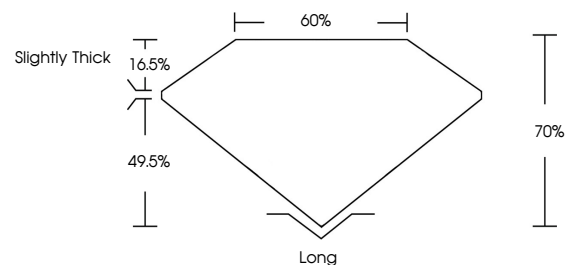
**GRADING RESULTS**

Carat Weight **1.74 CARAT**  
Color Grade **M**  
Clarity Grade **VS 1**  
Cut Grade **VERY GOOD**

**ADDITIONAL GRADING INFORMATION**

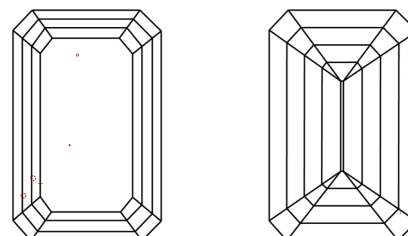
Polish **EXCELLENT**  
Symmetry **EXCELLENT**  
Fluorescence **VERY SLIGHT**  
Inscription(s) **IGI 723525393**

**PROPORTIONS**



Sample Image Used

**CLARITY CHARACTERISTICS**



**KEY TO SYMBOLS**

Red symbols indicate internal characteristics.  
Green symbols indicate external characteristics.

**COLOR**

D - F	G - J	K - M	N - R	S - Z	FANCY
Colorless	Near Colorless	Slightly Tinted	Very Light Color	Light Color	

**CLARITY**

IF	VVS <sup>1-2</sup>	VS <sup>1-2</sup>	SI <sup>1-2</sup>	I <sup>1-3</sup>
Internally Flawless	Very Very Slightly Included	Very Slightly Included	Slightly Included	Included

