



**ELECTRONIC COPY**

723525276  
Report verification at [igi.org](http://igi.org)



August 11, 2025  
IGI Report Number **723525276**  
Description **NATURAL DIAMOND**  
Shape and Cutting Style **EMERALD CUT**  
Measurements **6.84 X 4.74 X 3.24 MM**  
**GRADING RESULTS**  
Carat Weight **1.07 CARAT**  
Color Grade **J**  
Clarity Grade **VS 2**  
Cut Grade **VERY GOOD**

**DIAMOND REPORT**

August 11, 2025  
IGI Report Number **723525276**  
Description **NATURAL DIAMOND**  
Shape and Cutting Style **EMERALD CUT**  
Measurements **6.84 X 4.74 X 3.24 MM**

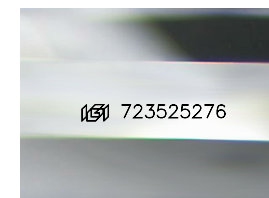
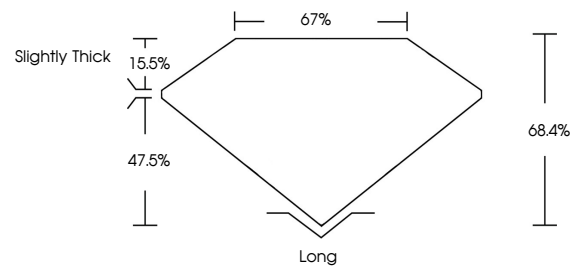
**GRADING RESULTS**

Carat Weight **1.07 CARAT**  
Color Grade **J**  
Clarity Grade **VS 2**  
Cut Grade **VERY GOOD**

**ADDITIONAL GRADING INFORMATION**

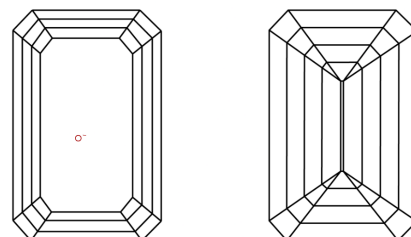
Polish **EXCELLENT**  
Symmetry **EXCELLENT**  
Fluorescence **NONE**  
Inscription(s) **723525276**

**PROPORTIONS**



Sample Image Used

**CLARITY CHARACTERISTICS**



**KEY TO SYMBOLS**

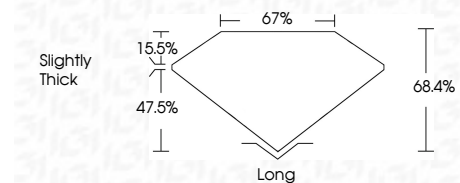
Red symbols indicate internal characteristics.  
Green symbols indicate external characteristics.

**COLOR**

D - F	G - J	K - M	N - R	S - Z	FANCY
Colorless	Near Colorless	Slightly Tinted	Very Light Color	Light Color	

**CLARITY**

IF	VVS <sup>1-2</sup>	VS <sup>1-2</sup>	SI <sup>1-2</sup>	I <sup>1-3</sup>
Internally Flawless	Very Very Slightly Included	Very Slightly Included	Slightly Included	Included



**ADDITIONAL GRADING INFORMATION**

Polish **EXCELLENT**  
Symmetry **EXCELLENT**  
Fluorescence **NONE**  
Inscription(s) **723525276**



**IGI**



August 11, 2025  
IGI Report No 723525276  
**EMERALD CUT**  
6.84 X 4.74 X 3.24 MM  
1.07 CARAT  
J  
Color Grade  
VS 2  
VERY GOOD  
68.4%  
67%  
Slightly Thick  
Long  
EXCELLENT  
EXCELLENT  
NONE  
NONE  
723525276