



# INTERNATIONAL GEMOLOGICAL INSTITUTE

ELECTRONIC COPY

## DIAMOND REPORT

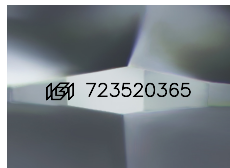
August 2, 2025  
IGI Report Number 723520365  
Description NATURAL DIAMOND  
Shape and Cutting Style ROUND BRILLIANT  
Measurements 4.18 - 4.20 X 2.58 MM

## GRADING RESULTS

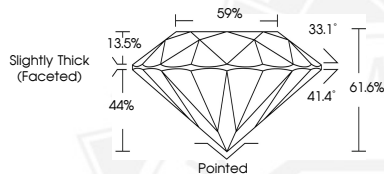
Carat Weight 0.28 CARAT  
Color Grade G  
Clarity Grade VVS 2  
Cut Grade EXCELLENT

## ADDITIONAL GRADING INFORMATION

Polish EXCELLENT  
Symmetry EXCELLENT  
Fluorescence NONE  
Identification Features FEATHER, CLOUD  
Inscription(s) IGI 723520365



Sample Image Used



August 2, 2025  
IGI Report Number 723520365  
ROUND BRILLIANT  
NATURAL DIAMOND  
4.18 - 4.20 X 2.58 MM  
Carat Weight 0.28 CARAT  
Color Grade G  
Clarity Grade VVS 2  
Cut Grade EXCELLENT  
Polish EXCELLENT  
Symmetry EXCELLENT  
Fluorescence NONE  
Inscription(s) IGI 723520365



August 2, 2025  
IGI Report Number 723520365  
ROUND BRILLIANT  
NATURAL DIAMOND  
4.18 - 4.20 X 2.58 MM  
Carat Weight 0.28 CARAT  
Color Grade G  
Clarity Grade VVS 2  
Cut Grade EXCELLENT  
Polish EXCELLENT  
Symmetry EXCELLENT  
Fluorescence NONE  
Inscription(s) IGI 723520365



THIS DOCUMENT WAS PRODUCED WITH THE FOLLOWING SECURITY MEASURES: SPECIAL DOCUMENT PAPER, INK SCREENS, WATERMARK, BACKGROUND DESIGNS, HOLOGRAM AND OTHER SECURITY FEATURES NOT LISTED AND DO EXCEED DOCUMENT SECURITY INDUSTRY GUIDELINES.

For terms & conditions and to verify this report, please visit [www.igi.org](http://www.igi.org)