



INTERNATIONAL GEMOLOGICAL INSTITUTE

DIAMOND REPORT

August 4, 2025

IGI Report Number

723520323

Description

NATURAL DIAMOND

Shape and Cutting Style

ROUND BRILLIANT

Measurements

4.14 - 4.17 X 2.52 MM

GRADING RESULTS

Carat Weight

0.27 CARAT

Color Grade

G

Clarity Grade

VVS 2

Cut Grade

EXCELLENT

ADDITIONAL GRADING INFORMATION

Polish

EXCELLENT

Symmetry

EXCELLENT

Fluorescence

NONE

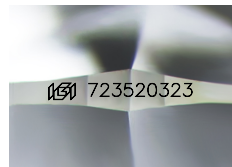
Identification Features

CRYSTAL CLOUD

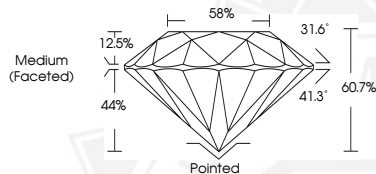
Inscription(s)

723520323

ELECTRONIC COPY



Sample Image Used



August 4, 2025

IGI Report Number 723520323

ROUND BRILLIANT

NATURAL DIAMOND

4.14 - 4.17 X 2.52 MM

Carat Weight 0.27 CARAT

Color Grade G

Clarity Grade VVS 2

Cut Grade EXCELLENT

Polish EXCELLENT

Symmetry EXCELLENT

Fluorescence NONE

Inscription(s) 723520323



August 4, 2025

IGI Report Number 723520323

ROUND BRILLIANT

NATURAL DIAMOND

4.14 - 4.17 X 2.52 MM

Carat Weight 0.27 CARAT

Color Grade G

Clarity Grade VVS 2

Cut Grade EXCELLENT

Polish EXCELLENT

Symmetry EXCELLENT

Fluorescence NONE

Inscription(s) 723520323



THIS DOCUMENT WAS PRODUCED WITH THE FOLLOWING SECURITY MEASURES: SPECIAL DOCUMENT PAPER, INK SCREENS, WATERMARK, BACKGROUND DESIGNS, HOLOGRAM AND OTHER SECURITY FEATURES NOT LISTED AND DO EXCEED DOCUMENT SECURITY INDUSTRY GUIDELINES.

For terms & conditions and to verify this report, please visit www.igi.org