



# INTERNATIONAL GEMOLOGICAL INSTITUTE

## DIAMOND REPORT

September 8, 2025

IGI Report Number

723510124

Description

NATURAL DIAMOND

Shape and Cutting Style

ROUND BRILLIANT

Measurements

4.72 - 4.75 X 2.93 MM

### GRADING RESULTS

Carat Weight

0.40 CARAT

Color Grade

K

Clarity Grade

VS 2

Cut Grade

EXCELLENT

### ADDITIONAL GRADING INFORMATION

Polish

EXCELLENT

Symmetry

EXCELLENT

Fluorescence

VERY SLIGHT

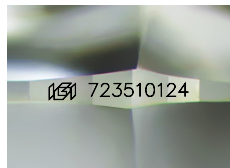
Identification Features

CRYSTAL, FEATHER

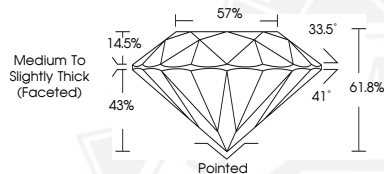
Inscription(s)

723510124

ELECTRONIC COPY



Sample Image Used



September 8, 2025

IGI Report Number 723510124

ROUND BRILLIANT

NATURAL DIAMOND

4.72 - 4.75 X 2.93 MM

Carat Weight 0.40 CARAT

Color Grade K

Clarity Grade VS 2

Cut Grade EXCELLENT

Polish EXCELLENT

Symmetry EXCELLENT

Fluorescence VERY SLIGHT

Inscription(s) 723510124



September 8, 2025

IGI Report Number 723510124

ROUND BRILLIANT

NATURAL DIAMOND

4.72 - 4.75 X 2.93 MM

Carat Weight 0.40 CARAT

Color Grade K

Clarity Grade VS 2

Cut Grade EXCELLENT

Polish EXCELLENT

Symmetry EXCELLENT

Fluorescence VERY SLIGHT

Inscription(s) 723510124



THIS DOCUMENT WAS PRODUCED WITH THE FOLLOWING SECURITY MEASURES: SPECIAL DOCUMENT PAPER, INK SCREENS, WATERMARK, BACKGROUND DESIGNS, HOLOGRAM AND OTHER SECURITY FEATURES NOT LISTED AND DO EXCEED DOCUMENT SECURITY INDUSTRY GUIDELINES.

For terms & conditions and to verify this report, please visit [www.igi.org](http://www.igi.org)