



**DIAMOND REPORT**

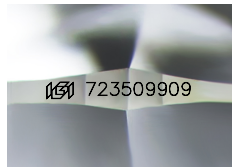
September 4, 2025  
IGI Report Number **723509909**  
Description **NATURAL DIAMOND**  
Shape and Cutting Style **ROUND BRILLIANT**  
Measurements **4.76 - 4.79 X 2.90 MM**

**GRADING RESULTS**

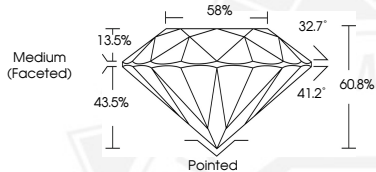
Carat Weight **0.40 CARAT**  
Color Grade **H**  
Clarity Grade **VS 2**  
Cut Grade **EXCELLENT**

**ADDITIONAL GRADING INFORMATION**

Polish **EXCELLENT**  
Symmetry **EXCELLENT**  
Fluorescence **NONE**  
Identification Features **FEATHER, CLOUD**  
Inscription(s) **IGI 723509909**



Sample Image Used



September 4, 2025  
IGI Report Number **723509909**  
**ROUND BRILLIANT**  
**NATURAL DIAMOND**  
**4.76 - 4.79 X 2.90 MM**  
Carat Weight **0.40 CARAT**  
Color Grade **H**  
Clarity Grade **VS 2**  
Cut Grade **EXCELLENT**  
Polish **EXCELLENT**  
Symmetry **EXCELLENT**  
Fluorescence **NONE**  
Inscription(s) **IGI 723509909**



September 4, 2025  
IGI Report Number **723509909**  
**ROUND BRILLIANT**  
**NATURAL DIAMOND**  
**4.76 - 4.79 X 2.90 MM**  
Carat Weight **0.40 CARAT**  
Color Grade **H**  
Clarity Grade **VS 2**  
Cut Grade **EXCELLENT**  
Polish **EXCELLENT**  
Symmetry **EXCELLENT**  
Fluorescence **NONE**  
Inscription(s) **IGI 723509909**



THIS DOCUMENT WAS PRODUCED WITH THE FOLLOWING SECURITY MEASURES: SPECIAL DOCUMENT PAPER, INK SCREENS, WATERMARK, BACKGROUND DESIGNS, HOLOGRAM AND OTHER SECURITY FEATURES NOT LISTED AND DO EXCEED DOCUMENT SECURITY INDUSTRY GUIDELINES.