



# INTERNATIONAL GEMOLOGICAL INSTITUTE

## DIAMOND REPORT

September 2, 2025

IGI Report Number

723509486

Description

NATURAL DIAMOND

Shape and Cutting Style

ROUND BRILLIANT

Measurements

4.44 - 4.46 X 2.81 MM

## GRADING RESULTS

Carat Weight

0.34 CARAT

Color Grade

H

Clarity Grade

SI 1

Cut Grade

EXCELLENT

## ADDITIONAL GRADING INFORMATION

Polish

EXCELLENT

Symmetry

EXCELLENT

Fluorescence

NONE

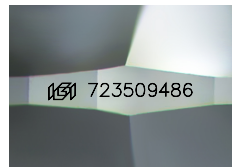
Identification Features

FEATHER, CLOUD, CRYSTAL

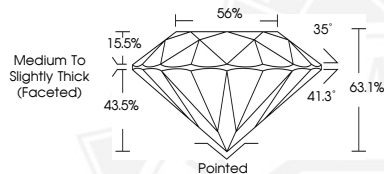
Inscription(s)

IGI 723509486

ELECTRONIC COPY



Sample Image Used



September 2, 2025

IGI Report Number 723509486

ROUND BRILLIANT

NATURAL DIAMOND

4.44 - 4.46 X 2.81 MM

Carat Weight 0.34 CARAT

Color Grade H

Clarity Grade SI 1

Cut Grade EXCELLENT

Polish EXCELLENT

Symmetry EXCELLENT

Fluorescence NONE

Inscription(s) IGI 723509486



September 2, 2025

IGI Report Number 723509486

ROUND BRILLIANT

NATURAL DIAMOND

4.44 - 4.46 X 2.81 MM

Carat Weight 0.34 CARAT

Color Grade H

Clarity Grade SI 1

Cut Grade EXCELLENT

Polish EXCELLENT

Symmetry EXCELLENT

Fluorescence NONE

Inscription(s) IGI 723509486



THIS DOCUMENT WAS PRODUCED WITH THE FOLLOWING SECURITY MEASURES: SPECIAL DOCUMENT PAPER, INK SCREENS, WATERMARK, BACKGROUND DESIGNS, HOLOGRAM AND OTHER SECURITY FEATURES NOT LISTED AND DO EXCEED DOCUMENT SECURITY INDUSTRY GUIDELINES.

For terms & conditions and to verify this report, please visit [www.igi.org](http://www.igi.org)