



# INTERNATIONAL GEMOLOGICAL INSTITUTE

## DIAMOND REPORT

July 24, 2025  
IGI Report Number **723505726**  
Description **NATURAL DIAMOND**  
Shape and Cutting Style **ROUND BRILLIANT**  
Measurements **4.88 - 4.91 X 3.09 MM**

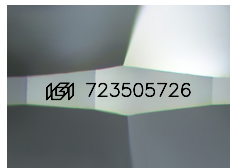
### GRADING RESULTS

Carat Weight **0.46 CARAT**  
Color Grade **I**  
Clarity Grade **VVS 2**  
Cut Grade **EXCELLENT**

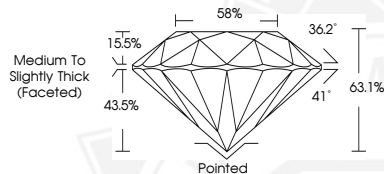
### ADDITIONAL GRADING INFORMATION

Polish **EXCELLENT**  
Symmetry **EXCELLENT**  
Fluorescence **NONE**  
Identification Features **FEATHER**  
Inscription(s) **IGI 723505726**

ELECTRONIC COPY



Sample Image Used



July 24, 2025  
IGI Report Number **723505726**  
**ROUND BRILLIANT**  
**NATURAL DIAMOND**  
**4.88 - 4.91 X 3.09 MM**  
Carat Weight **0.46 CARAT**  
Color Grade **I**  
Clarity Grade **VVS 2**  
Cut Grade **EXCELLENT**  
Polish **EXCELLENT**  
Symmetry **EXCELLENT**  
Fluorescence **NONE**  
Inscription(s) **IGI 723505726**



July 24, 2025  
IGI Report Number **723505726**  
**ROUND BRILLIANT**  
**NATURAL DIAMOND**  
**4.88 - 4.91 X 3.09 MM**  
Carat Weight **0.46 CARAT**  
Color Grade **I**  
Clarity Grade **VVS 2**  
Cut Grade **EXCELLENT**  
Polish **EXCELLENT**  
Symmetry **EXCELLENT**  
Fluorescence **NONE**  
Inscription(s) **IGI 723505726**



THIS DOCUMENT WAS PRODUCED WITH THE FOLLOWING SECURITY MEASURES: SPECIAL DOCUMENT PAPER, INK SCREENS, WATERMARK, BACKGROUND DESIGNS, HOLOGRAM AND OTHER SECURITY FEATURES NOT LISTED AND DO EXCEED DOCUMENT SECURITY INDUSTRY GUIDELINES.

For terms & conditions and to verify this report, please visit [www.igi.org](http://www.igi.org)