



**ELECTRONIC COPY**

722553398  
Report verification at [igi.org](http://igi.org)



November 24, 2025  
IGI Report Number **722553398**  
Description **NATURAL DIAMOND**  
Shape and Cutting Style **ROUND BRILLIANT**  
Measurements **10.05 - 10.11 X 6.30 MM**

**GRADING RESULTS**

Carat Weight **4.00 CARATS**  
Color Grade **I**  
Clarity Grade **VS 1**  
Cut Grade **EXCELLENT**

November 24, 2025  
IGI Report Number **722553398**  
Description **NATURAL DIAMOND**  
Shape and Cutting Style **ROUND BRILLIANT**  
Measurements **10.05 - 10.11 X 6.30 MM**

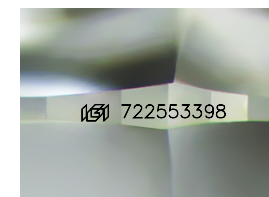
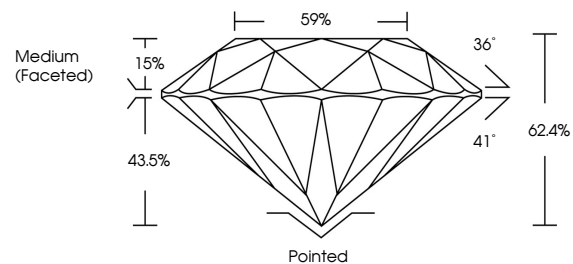
**GRADING RESULTS**

Carat Weight **4.00 CARATS**  
Color Grade **I**  
Clarity Grade **VS 1**  
Cut Grade **EXCELLENT**

**ADDITIONAL GRADING INFORMATION**

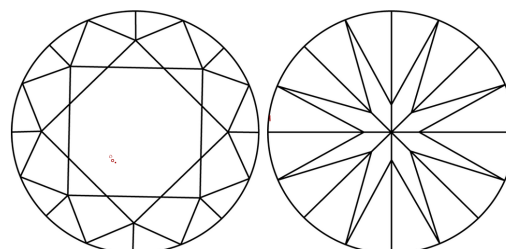
Polish **EXCELLENT**  
Symmetry **EXCELLENT**  
Fluorescence **NONE**  
Inscription(s) **722553398**  
Comments: IDEAL CUT ROUND BRILLIANT

**PROPORTIONS**



Sample Image Used

**CLARITY CHARACTERISTICS**



**KEY TO SYMBOLS**

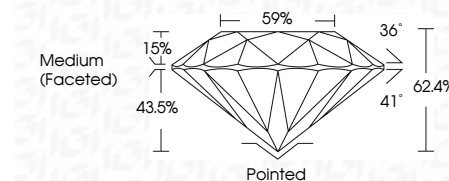
Red symbols indicate internal characteristics.  
Green symbols indicate external characteristics.

**COLOR**

D - F	G - J	K - M	N - R	S - Z	FANCY
Colorless	Near Colorless	Slightly Tinted	Very Light Color	Light Color	

**CLARITY**

FL	IF	VVS 1-2	VS 1-2	SI 1-2	I 1-3
Flawless	Internally Flawless	Very Very Slightly Included	Very Slightly Included	Slightly Included	Included



**ADDITIONAL GRADING INFORMATION**

Polish **EXCELLENT**  
Symmetry **EXCELLENT**  
Fluorescence **NONE**  
Inscription(s) **722553398**  
Comments: IDEAL CUT ROUND BRILLIANT



**IGI**



November 24, 2025  
IGI Report No 722553398  
**ROUND BRILLIANT**  
4.00 CARATS  
I  
VS 1  
EXCELLENT  
62.4%  
59%  
Medium (Faceted)  
Pointed  
EXCELLENT  
EXCELLENT  
NONE  
NONE  
722553398  
Comments: IDEAL CUT ROUND BRILLIANT