



ELECTRONIC COPY

722509909
Report verification at igi.org



July 15, 2025
IGI Report Number **722509909**
Description **NATURAL DIAMOND**
Shape and Cutting Style **SQUARE EMERALD CUT**
Measurements **10.84 X 10.61 X 7.04 MM**
GRADING RESULTS
Carat Weight **7.32 CARATS**
Color Grade **H**
Clarity Grade **VVS 2**
Cut Grade **EXCELLENT**

DIAMOND REPORT

July 15, 2025
IGI Report Number **722509909**
Description **NATURAL DIAMOND**
Shape and Cutting Style **SQUARE EMERALD CUT**
Measurements **10.84 X 10.61 X 7.04 MM**

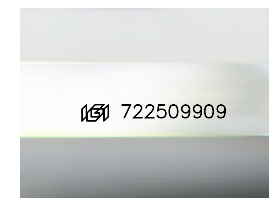
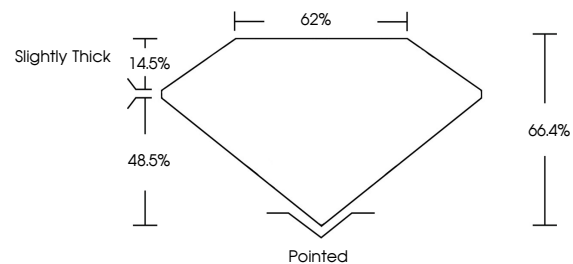
GRADING RESULTS

Carat Weight **7.32 CARATS**
Color Grade **H**
Clarity Grade **VVS 2**
Cut Grade **EXCELLENT**

ADDITIONAL GRADING INFORMATION

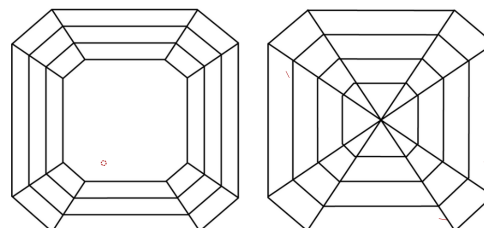
Polish **VERY GOOD**
Symmetry **EXCELLENT**
Fluorescence **NONE**
Inscription(s) **722509909**

PROPORTIONS



Sample Image Used

CLARITY CHARACTERISTICS



KEY TO SYMBOLS

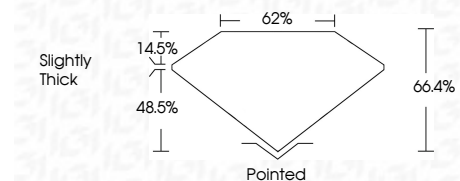
Red symbols indicate internal characteristics.
Green symbols indicate external characteristics.

COLOR

D - F	G - J	K - M	N - R	S - Z	FANCY
Colorless	Near Colorless	Slightly Tinted	Very Light Color	Light Color	

CLARITY

IF	VVS ¹⁻²	VS ¹⁻²	SI ¹⁻²	I ¹⁻³
Internally Flawless	Very Very Slightly Included	Very Slightly Included	Slightly Included	Included



ADDITIONAL GRADING INFORMATION

Polish **VERY GOOD**
Symmetry **EXCELLENT**
Fluorescence **NONE**
Inscription(s) **722509909**



IGI



July 15, 2025	IGI Report No. 722509909	SQUARE EMERALD CUT	10.84 X 10.61 X 7.04 MM	7.32 CARATS	H	VVS 2	EXCELLENT	66.4%	62%	Slightly Thick	Pointed	VERY GOOD	EXCELLENT	NONE	722509909
				Carat Weight	Color Grade	Clarity Grade	Cut Grade	Depth	Table	Girdle	Culet	Polish	Symmetry	Fluorescence	Inscriptions(s)