



# INTERNATIONAL GEMOLOGICAL INSTITUTE

ELECTRONIC COPY

## DIAMOND REPORT

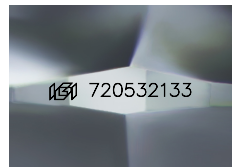
August 26, 2025  
IGI Report Number **720532133**  
Description **NATURAL DIAMOND**  
Shape and Cutting Style **ROUND BRILLIANT**  
Measurements **4.60 - 4.63 X 3.00 MM**

## GRADING RESULTS

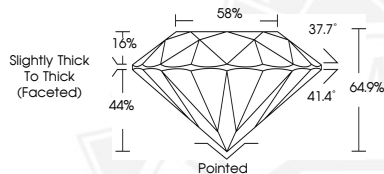
Carat Weight **0.40 CARAT**  
Color Grade **H**  
Clarity Grade **VS 2**  
Cut Grade **VERY GOOD**

## ADDITIONAL GRADING INFORMATION

Polish **EXCELLENT**  
Symmetry **VERY GOOD**  
Fluorescence **NONE**  
Identification Features **FEATHER**  
Inscription(s) **IGI 720532133**



Sample Image Used



August 26, 2025  
IGI Report Number **720532133**  
**ROUND BRILLIANT**  
**NATURAL DIAMOND**  
**4.60 - 4.63 X 3.00 MM**  
Carat Weight **0.40 CARAT**  
Color Grade **H**  
Clarity Grade **VS 2**  
Cut Grade **VERY GOOD**  
Polish **EXCELLENT**  
Symmetry **VERY GOOD**  
Fluorescence **NONE**  
Inscription(s) **IGI 720532133**



August 26, 2025  
IGI Report Number **720532133**  
**ROUND BRILLIANT**  
**NATURAL DIAMOND**  
**4.60 - 4.63 X 3.00 MM**  
Carat Weight **0.40 CARAT**  
Color Grade **H**  
Clarity Grade **VS 2**  
Cut Grade **VERY GOOD**  
Polish **EXCELLENT**  
Symmetry **VERY GOOD**  
Fluorescence **NONE**  
Inscription(s) **IGI 720532133**



THIS DOCUMENT WAS PRODUCED WITH THE FOLLOWING SECURITY MEASURES: SPECIAL DOCUMENT PAPER, INK SCREENS, WATERMARK, BACKGROUND DESIGNS, HOLOGRAM AND OTHER SECURITY FEATURES NOT LISTED AND DO EXCEED DOCUMENT SECURITY INDUSTRY GUIDELINES.

For terms & conditions and to verify this report, please visit [www.igi.org](http://www.igi.org)