



INTERNATIONAL GEMOLOGICAL INSTITUTE

DIAMOND REPORT

August 22, 2025
IGI Report Number **720531337**
Description **NATURAL DIAMOND**
Shape and Cutting Style **ROUND BRILLIANT**
Measurements **4.70 - 4.75 X 2.96 MM**

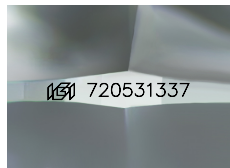
GRADING RESULTS

Carat Weight **0.40 CARAT**
Color Grade **I**
Clarity Grade **SI 1**
Cut Grade **EXCELLENT**

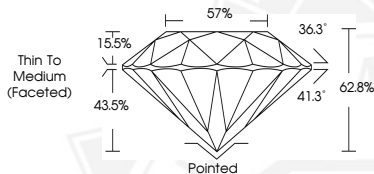
ADDITIONAL GRADING INFORMATION

Polish **EXCELLENT**
Symmetry **EXCELLENT**
Fluorescence **NONE**
Identification Features **FEATHER, CRYSTAL, NEEDLE**
Inscription(s) **IGI 720531337**

ELECTRONIC COPY



Sample Image Used



THIS DOCUMENT WAS PRODUCED WITH THE FOLLOWING SECURITY MEASURES: SPECIAL DOCUMENT PAPER, INK SCREENS, WATERMARK, BACKGROUND DESIGNS, HOLOGRAM AND OTHER SECURITY FEATURES NOT LISTED AND DO EXCEED DOCUMENT SECURITY INDUSTRY GUIDELINES.

For terms & conditions and to verify this report, please visit www.igi.org



August 22, 2025

IGI Report Number **720531337**

ROUND BRILLIANT

NATURAL DIAMOND

4.70 - 4.75 X 2.96 MM

Carat Weight **0.40 CARAT**

Color Grade **I**

Clarity Grade **SI 1**

Cut Grade **EXCELLENT**

Polish **EXCELLENT**

Symmetry **EXCELLENT**

Fluorescence **NONE**

Inscription(s) **IGI 720531337**



August 22, 2025

IGI Report Number **720531337**

ROUND BRILLIANT

NATURAL DIAMOND

4.70 - 4.75 X 2.96 MM

Carat Weight **0.40 CARAT**

Color Grade **I**

Clarity Grade **SI 1**

Cut Grade **EXCELLENT**

Polish **EXCELLENT**

Symmetry **EXCELLENT**

Fluorescence **NONE**

Inscription(s) **IGI 720531337**