



# INTERNATIONAL GEMOLOGICAL INSTITUTE

## DIAMOND REPORT

September 11, 2025

IGI Report Number

720530979

Description

NATURAL DIAMOND

Shape and Cutting Style

ROUND BRILLIANT

Measurements

5.66 - 5.70 X 3.55 MM

## GRADING RESULTS

Carat Weight

0.71 CARAT

Color Grade

E

Clarity Grade

VS 2

Cut Grade

EXCELLENT

## ADDITIONAL GRADING INFORMATION

Polish

EXCELLENT

Symmetry

EXCELLENT

Fluorescence

SLIGHT

Identification Features

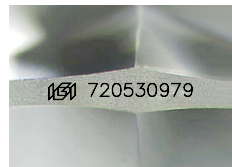
CRYSTAL, FEATHER, CLOUD

Inscription(s)

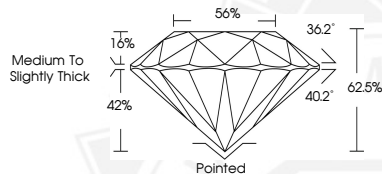
IGI 720530979

Comments: IDEAL CUT ROUND BRILLIANT

ELECTRONIC COPY



Sample Image Used



THIS DOCUMENT WAS PRODUCED WITH THE FOLLOWING SECURITY MEASURES: SPECIAL DOCUMENT PAPER, INK SCREENS, WATERMARK, BACKGROUND DESIGNS, HOLOGRAM AND OTHER SECURITY FEATURES NOT LISTED AND DO EXCEED DOCUMENT SECURITY INDUSTRY GUIDELINES.

For terms & conditions and to verify this report, please visit [www.igi.org](http://www.igi.org)



September 11, 2025

IGI Report Number 720530979

ROUND BRILLIANT

NATURAL DIAMOND

5.66 - 5.70 X 3.55 MM

Carat Weight 0.71 CARAT

Color Grade E

Clarity Grade VS 2

Cut Grade EXCELLENT

Polish EXCELLENT

Symmetry EXCELLENT

Fluorescence SLIGHT

Inscription(s) IGI 720530979

Comments: IDEAL CUT ROUND

BRILLIANT



September 11, 2025

IGI Report Number 720530979

ROUND BRILLIANT

NATURAL DIAMOND

5.66 - 5.70 X 3.55 MM

Carat Weight 0.71 CARAT

Color Grade E

Clarity Grade VS 2

Cut Grade EXCELLENT

Polish EXCELLENT

Symmetry EXCELLENT

Fluorescence SLIGHT

Inscription(s) IGI 720530979

Comments: IDEAL CUT ROUND

BRILLIANT