



**ELECTRONIC COPY**

720513541  
Report verification at [igi.org](http://igi.org)

**DIAMOND REPORT**

October 15, 2025  
IGI Report Number **720513541**  
Description **NATURAL DIAMOND**  
Shape and Cutting Style **ROUND BRILLIANT**  
Measurements **11.02 - 11.09 X 6.72 MM**

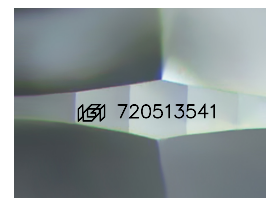
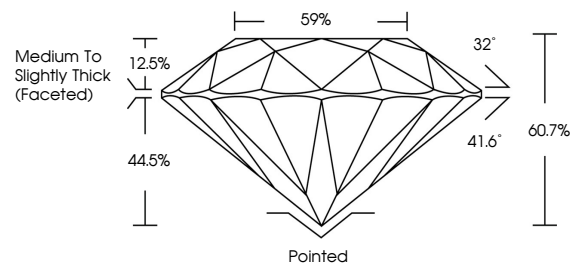
**GRADING RESULTS**

Carat Weight **5.01 CARATS**  
Color Grade **J**  
Clarity Grade **SI 2**  
Cut Grade **EXCELLENT**

**ADDITIONAL GRADING INFORMATION**

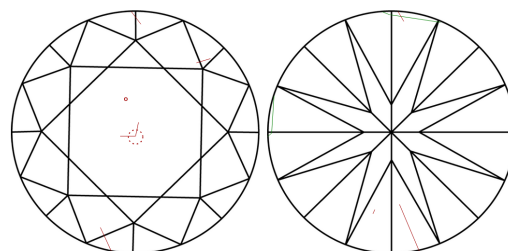
Polish **EXCELLENT**  
Symmetry **EXCELLENT**  
Fluorescence **STRONG**  
Inscription(s) **720513541**

**PROPORTIONS**



Sample Image Used

**CLARITY CHARACTERISTICS**



**KEY TO SYMBOLS**

Red symbols indicate internal characteristics.  
Green symbols indicate external characteristics.

**COLOR**

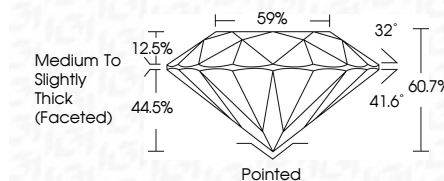
D - F	G - J	K - M	N - R	S - Z	FANCY
Colorless	Near Colorless	Slightly Tinted	Very Light Color	Light Color	

**CLARITY**

IF	VVS <sup>1-2</sup>	VS <sup>1-2</sup>	SI <sup>1-2</sup>	I <sup>1-3</sup>
Internally Flawless	Very Very Slightly Included	Very Slightly Included	Slightly Included	Included



October 15, 2025  
IGI Report Number **720513541**  
Description **NATURAL DIAMOND**  
Shape and Cutting Style **ROUND BRILLIANT**  
Measurements **11.02 - 11.09 X 6.72 MM**  
**GRADING RESULTS**  
Carat Weight **5.01 CARATS**  
Color Grade **J**  
Clarity Grade **SI 2**  
Cut Grade **EXCELLENT**



**ADDITIONAL GRADING INFORMATION**

Polish **EXCELLENT**  
Symmetry **EXCELLENT**  
Fluorescence **STRONG**  
Inscription(s) **720513541**



**IGI**



October 15, 2025  
IGI Report No 720513541  
**ROUND BRILLIANT**  
5.01 CARATS  
Color Grade **J**  
Clarity Grade **SI 2**  
Depth **EXCELLENT**  
Table **60.7%**  
Girdle **59%**  
Medium To Slightly Thick (Faceted)  
Culet **Pointed**  
Polish **EXCELLENT**  
Symmetry **EXCELLENT**  
Fluorescence **STRONG**  
Inscription(s) **720513541**