



**ELECTRONIC COPY**

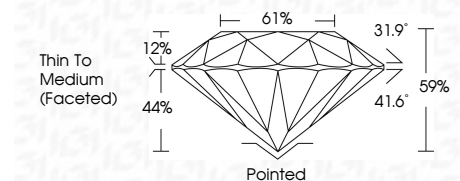
719579426  
Report verification at [igi.org](http://igi.org)



July 7, 2025  
IGI Report Number **719579426**  
Description **NATURAL DIAMOND**  
Shape and Cutting Style **ROUND BRILLIANT**  
Measurements **11.96 - 12.04 X 7.08 MM**

**GRADING RESULTS**

Carat Weight **6.03 CARATS**  
Color Grade **G**  
Clarity Grade **VVS 1**  
Cut Grade **EXCELLENT**



**ADDITIONAL GRADING INFORMATION**

Polish **EXCELLENT**  
Symmetry **EXCELLENT**  
Fluorescence **NONE**  
Inscription(s) **(IGI) 719579426**



**IGI**

July 7, 2025  
IGI Report No 719579426  
ROUND BRILLIANT  
11.96 - 12.04 X 7.08 MM  
6.03 CARATS  
G  
VVS 1  
EXCELLENT  
61%  
Thin To Medium (Faceted)  
Pointed  
EXCELLENT  
EXCELLENT  
NONE  
(IGI) 719579426

**DIAMOND REPORT**

July 7, 2025  
IGI Report Number **719579426**  
Description **NATURAL DIAMOND**  
Shape and Cutting Style **ROUND BRILLIANT**  
Measurements **11.96 - 12.04 X 7.08 MM**

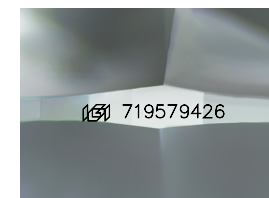
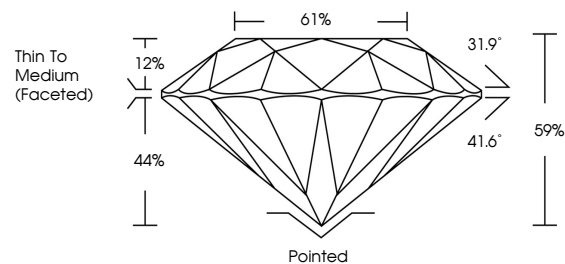
**GRADING RESULTS**

Carat Weight **6.03 CARATS**  
Color Grade **G**  
Clarity Grade **VVS 1**  
Cut Grade **EXCELLENT**

**ADDITIONAL GRADING INFORMATION**

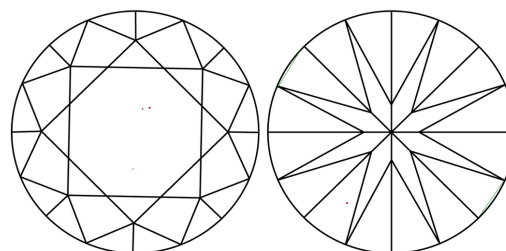
Polish **EXCELLENT**  
Symmetry **EXCELLENT**  
Fluorescence **NONE**  
Inscription(s) **(IGI) 719579426**

**PROPORTIONS**



Sample Image Used

**CLARITY CHARACTERISTICS**



**KEY TO SYMBOLS**

Red symbols indicate internal characteristics.  
Green symbols indicate external characteristics.

**COLOR**

D - F	G - J	K - M	N - R	S - Z	FANCY
Colorless	Near Colorless	Slightly Tinted	Very Light Color	Light Color	

**CLARITY**

IF	VVS <sup>1-2</sup>	VS <sup>1-2</sup>	SI <sup>1-2</sup>	I <sup>1-3</sup>
Internally Flawless	Very Very Slightly Included	Very Slightly Included	Slightly Included	Included

