



ELECTRONIC COPY

719566323
Report verification at igi.org



July 16, 2025
IGI Report Number **719566323**
Description **NATURAL DIAMOND**
Shape and Cutting Style **EMERALD CUT**
Measurements **6.95 X 4.93 X 3.46 MM**
GRADING RESULTS
Carat Weight **1.21 CARAT**
Color Grade **J**
Clarity Grade **INTERNALLY FLAWLESS**
Cut Grade **VERY GOOD**

DIAMOND REPORT

July 16, 2025
IGI Report Number **719566323**
Description **NATURAL DIAMOND**
Shape and Cutting Style **EMERALD CUT**
Measurements **6.95 X 4.93 X 3.46 MM**

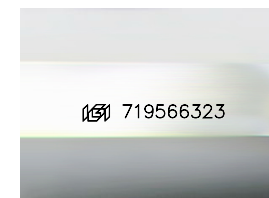
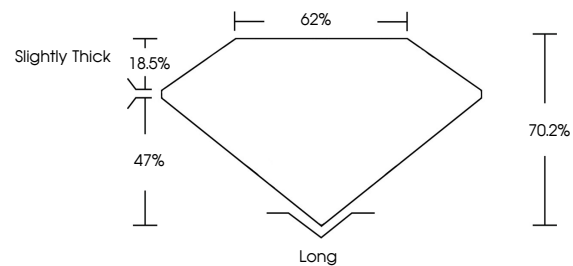
GRADING RESULTS

Carat Weight **1.21 CARAT**
Color Grade **J**
Clarity Grade **INTERNALLY FLAWLESS**
Cut Grade **VERY GOOD**

ADDITIONAL GRADING INFORMATION

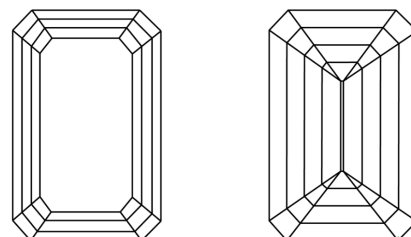
Polish **EXCELLENT**
Symmetry **EXCELLENT**
Fluorescence **NONE**
Inscription(s) **719566323**

PROPORTIONS



Sample Image Used

CLARITY CHARACTERISTICS



KEY TO SYMBOLS

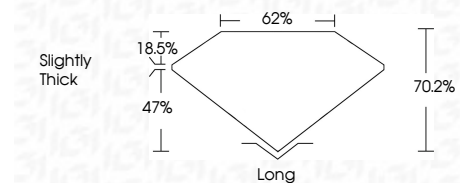
Red symbols indicate internal characteristics.
Green symbols indicate external characteristics.

COLOR

D - F	G - J	K - M	N - R	S - Z	FANCY
Colorless	Near Colorless	Slightly Tinted	Very Light Color	Light Color	

CLARITY

IF	VVS ¹⁻²	VS ¹⁻²	SI ¹⁻²	I ¹⁻³
Internally Flawless	Very Very Slightly Included	Very Slightly Included	Slightly Included	Included



ADDITIONAL GRADING INFORMATION

Polish **EXCELLENT**
Symmetry **EXCELLENT**
Fluorescence **NONE**
Inscription(s) **719566323**



IGI



July 16, 2025
IGI Report No 719566323
EMERALD CUT
6.95 X 4.93 X 3.46 MM
1.21 CARAT
J
Color Grade
Color Grade
Clarity Grade
Clarity Grade
Depth
70.2%
Table
62%
Girdle
Slightly Thick
Long
EXCELLENT
Polish
EXCELLENT
Symmetry
EXCELLENT
Fluorescence
NONE
Inscription(s)
 719566323