



**ELECTRONIC COPY**

## DIAMOND REPORT

July 14, 2025	
IGI Report Number	719566207
Description	NATURAL DIAMOND
Shape and Cutting Style	ROUND BRILLIANT
Measurements	6.93 - 6.99 X 4.38 MM

## GRADING RESULTS

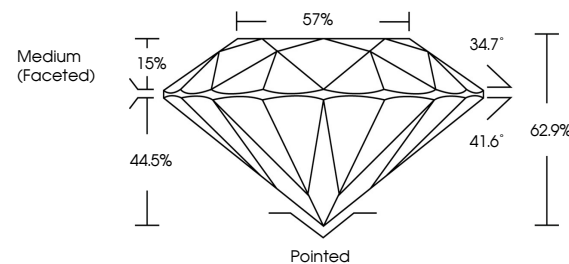
Carat Weight	1.31 CARAT
Color Grade	H
Clarity Grade	SI 1
Cut Grade	EXCELLENT

### ADDITIONAL GRADING INFORMATION

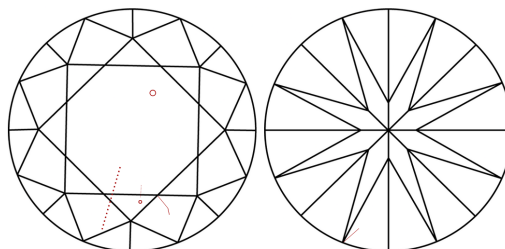
Polish	EXCELLENT
Symmetry	EXCELLENT
Fluorescence	VERY SLIGHT
Inscription(s)	131 719566207

719566207  
Report verification at [igi.org](http://igi.org)

## PROPORTIONS

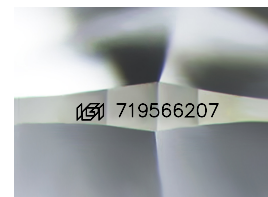


## CLARITY CHARACTERISTICS



## KEY TO SYMBOLS

Red symbols indicate internal characteristics.  
Green symbols indicate external characteristics.



Sample Image Used

**COLOR**

D - F	G - J	K - M	N - R	S - Z	FANCY
Colorless	Near Colorless	Slightly Tinted	Very Light Color	Light Color	

## CLARITY

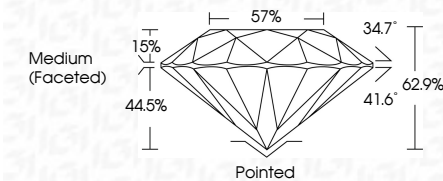
IF	VVS <sup>1-2</sup>	VS <sup>1-2</sup>	SI <sup>1-2</sup>	I <sup>1-3</sup>
Internally Flawless	Very Very Slightly Included	Very Slightly Included	Slightly Included	Included



July 14, 2025	
IGI Report Number	719566207
Description	NATURAL DIAMOND
Shape and Cutting Style	ROUND BRILLIANT
Measurements	6.93 - 6.99 X 4.38 MM

## GRADING RESULTS

Carat Weight	1.31 CARAT
Color Grade	H
Clarity Grade	SI 1
Cut Grade	EXCELLENT



### ADDITIONAL GRADING INFORMATION

Polish	EXCELLENT
Symmetry	EXCELLENT
Fluorescence	VERY SLIGHT
Inscription(s)	(15) 719566207



© IGI 2020, International Gemological Institute

FD - 10 20

**www.igi.org**



THIS DOCUMENT WAS PRODUCED WITH THE FOLLOWING SECURITY MEASURES: SPECIAL DOCUMENT PAPER, INK SCREENS, WATERMARK, BACKGROUND DESIGNS, HOLOGRAM AND OTHER SECURITY FEATURES NOT LISTED AND DO EXCEED DOCUMENT SECURITY INDUSTRY GUIDELINE

July 14, 2025  
GI Report No 719566207  
ROUND BRILLIANT

Report No. 719656207	1.31 CARAT	H	S1	EXCELLENT	62.9%	57%	Medium (Faceted)	Pointed	EXCELLENT	EXCELLENT	VERY SLIGHT	near 719656207
ROUND BRILLIANT	Color Grade	Clarity Grade	Cut Grade	Depth	Table	Girdle		Culet	Polish	Symmetry	Fluorescence	Annotations(s)
G Report No. 719656207	1.31 CARAT	H	S1	EXCELLENT	62.9%	57%	Medium (Faceted)	Pointed	EXCELLENT	EXCELLENT	VERY SLIGHT	near 719656207