



**ELECTRONIC COPY**

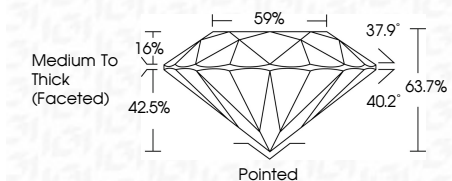
719548301  
Report verification at [igi.org](http://igi.org)



January 5, 2026  
IGI Report Number **719548301**  
Description **NATURAL DIAMOND**  
Shape and Cutting Style **ROUND BRILLIANT**  
Measurements **8.91 - 9.02 X 5.72 MM**

**GRADING RESULTS**

Carat Weight **3.00 CARATS**  
Color Grade **I**  
Clarity Grade **VVS 2**  
Cut Grade **VERY GOOD**



**ADDITIONAL GRADING INFORMATION**

Polish **EXCELLENT**  
Symmetry **VERY GOOD**  
Fluorescence **NONE**  
Inscription(s) **IGI 719548301**



**IGI**

January 5, 2026  
IGI Report No 719548301  
**ROUND BRILLIANT**  
8.91 - 9.02 X 5.72 MM  
3.00 CARATS  
I  
VVS 2  
VERY GOOD  
63.7%  
59%  
Medium To Thick (Faceted)  
Pointed  
EXCELLENT  
VERY GOOD  
NONE  
IGI 719548301

**DIAMOND REPORT**

January 5, 2026  
IGI Report Number **719548301**  
Description **NATURAL DIAMOND**  
Shape and Cutting Style **ROUND BRILLIANT**  
Measurements **8.91 - 9.02 X 5.72 MM**

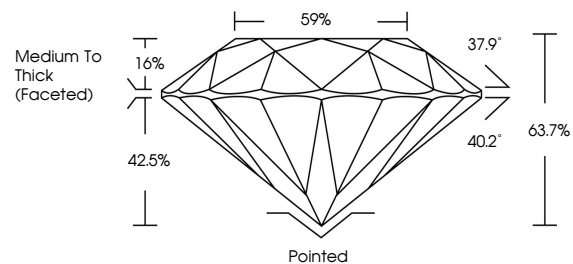
**GRADING RESULTS**

Carat Weight **3.00 CARATS**  
Color Grade **I**  
Clarity Grade **VVS 2**  
Cut Grade **VERY GOOD**

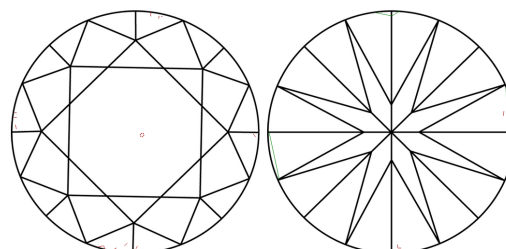
**ADDITIONAL GRADING INFORMATION**

Polish **EXCELLENT**  
Symmetry **VERY GOOD**  
Fluorescence **NONE**  
Inscription(s) **IGI 719548301**

**PROPORTIONS**

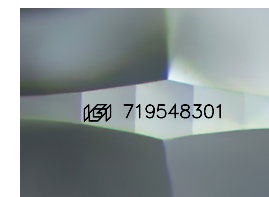


**CLARITY CHARACTERISTICS**



**KEY TO SYMBOLS**

Red symbols indicate internal characteristics.  
Green symbols indicate external characteristics.



Sample Image Used

**COLOR**

D - F	G - J	K - M	N - R	S - Z	FANCY
Colorless	Near Colorless	Slightly Tinted	Very Light Color	Light Color	

**CLARITY**

FL	IF	VVS 1-2	VS 1-2	SI 1-2	I 1-3
Flawless	Internally Flawless	Very Very Slightly Included	Very Slightly Included	Slightly Included	Included

