



ELECTRONIC COPY

719548174
Report verification at igi.org



December 11, 2025
IGI Report Number **719548174**
Description **NATURAL DIAMOND**
Shape and Cutting Style **PRINCESS CUT**
Measurements **7.29 X 7.29 X 5.28 MM**
GRADING RESULTS
Carat Weight **2.50 CARATS**
Color Grade **I**
Clarity Grade **VS 1**
Cut Grade **VERY GOOD**

DIAMOND REPORT

December 11, 2025
IGI Report Number **719548174**
Description **NATURAL DIAMOND**
Shape and Cutting Style **PRINCESS CUT**
Measurements **7.29 X 7.29 X 5.28 MM**

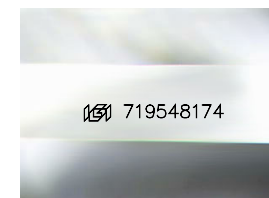
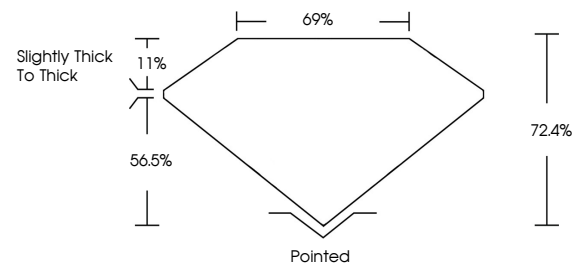
GRADING RESULTS

Carat Weight **2.50 CARATS**
Color Grade **I**
Clarity Grade **VS 1**
Cut Grade **VERY GOOD**

ADDITIONAL GRADING INFORMATION

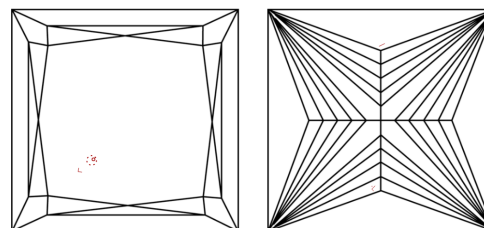
Polish **EXCELLENT**
Symmetry **EXCELLENT**
Fluorescence **NONE**
Inscription(s) **719548174**

PROPORTIONS



Sample Image Used

CLARITY CHARACTERISTICS



KEY TO SYMBOLS

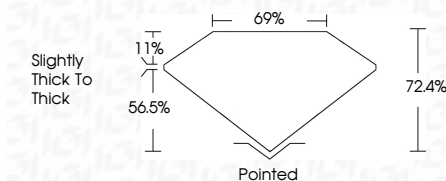
Red symbols indicate internal characteristics.
Green symbols indicate external characteristics.

COLOR

D - F	G - J	K - M	N - R	S - Z	FANCY
Colorless	Near Colorless	Slightly Tinted	Very Light Color	Light Color	

CLARITY

FL	IF	VVS ¹⁻²	VS ¹⁻²	SI ¹⁻²	I ¹⁻³
Flawless	Internally Flawless	Very Very Slightly Included	Very Slightly Included	Slightly Included	Included



ADDITIONAL GRADING INFORMATION

Polish **EXCELLENT**
Symmetry **EXCELLENT**
Fluorescence **NONE**
Inscription(s) **719548174**



IGI



December 11, 2025
IGI Report No 719548174
PRINCESS CUT
7.29 X 7.29 X 5.28 MM
2.50 CARATS
I
Color Grade
VS 1
VERY GOOD
72.4%
69%
Slightly thick to thick
Pointed
EXCELLENT
EXCELLENT
NONE
NONE
719548174