



**ELECTRONIC COPY**

## DIAMOND REPORT

October 3, 2025	
IGI Report Number	719547818
Description	NATURAL DIAMOND
Shape and Cutting Style	ROUND BRILLIANT
Measurements	6.40 - 6.43 X 4.03 MM

## GRADING RESULTS

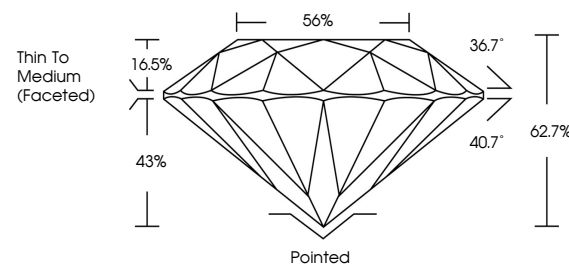
Carat Weight	1.03 CARAT
Color Grade	F
Clarity Grade	VS 2
Cut Grade	EXCELLENT

### ADDITIONAL GRADING INFORMATION

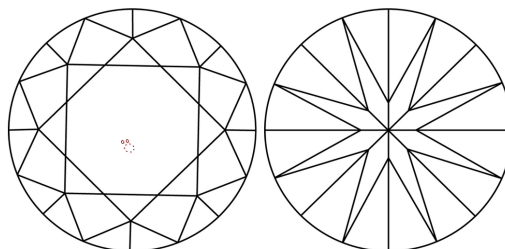
Polish	EXCELLENT
Symmetry	EXCELLENT
Fluorescence	NONE
Inscription(s)	151 719547818

719547818  
Report verification at [igi.org](https://igi.org)

## PROPORTIONS

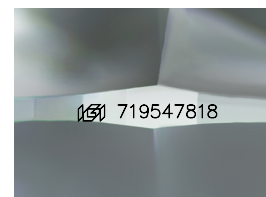


## CLARITY CHARACTERISTICS



### KEY TO SYMBOLS

Red symbols indicate internal characteristics.  
Green symbols indicate external characteristics.



Sample Image Used

**COLOR**

D - F	G - J	K - M	N - R	S - Z	FANCY
Colorless	Near Colorless	Slightly Tinted	Very Light Color	Light Color	

## CLARITY

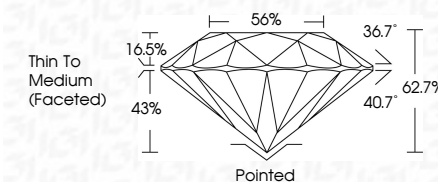
IF	VVS <sup>1-2</sup>	VS <sup>1-2</sup>	SI <sup>1-2</sup>	I <sup>1-3</sup>
Internally Flawless	Very Very Slightly Included	Very Slightly Included	Slightly Included	Included



October 3, 2025	
IGI Report Number	719547818
Description	NATURAL DIAMOND
Shape and Cutting Style	ROUND BRILLIANT
Measurements	6.40 - 6.43 X 4.03 MM

## GRADING RESULTS

Carat Weight	1.03 CARAT
Color Grade	F
Clarity Grade	VS 2
Cut Grade	EXCELLENT



### ADDITIONAL GRADING INFORMATION

Polish	EXCELLENT
Symmetry	EXCELLENT
Fluorescence	NONE
Inscription(s)	(15) 719547818



© IGI 2020, International Gemological Institute

FD - 10 20



THIS DOCUMENT WAS PRODUCED WITH THE FOLLOWING SECURITY MEASURES: SPECIAL DOCUMENT PAPER, INK SCREENS, WATERMARK, BACKGROUND DESIGNS, HOLOGRAM AND OTHER SECURITY FEATURES NOT LISTED AND DO EXCEED DOCUMENT SECURITY INDUSTRY GUIDELINES

**www.igi.org**

October 3, 2025  
GI Report No 719547818  
ROUND BRILLIANT

<b>ROUND BRILLIANT</b>	<b>1.03 CARAT F VS2 EXCELLENT</b>	<b>4.47 - 4.63 X 4.03 MM</b>	<b>Color Weight Color Grade Clarity Grade Cut Grade Depth Table Girdle Culet Polish Symmetry Fluorescence Inclusions</b>	<b>VS2 EXCELLENT 62-7% 56% Thin To Medium (Faceted) Pined EXCELLENT EXCELLENT NONE near 7/95/57/8</b>
------------------------	-----------------------------------	------------------------------	--	---