



# INTERNATIONAL GEMOLOGICAL INSTITUTE

## DIAMOND REPORT

August 6, 2025

IGI Report Number

719528038

Description

NATURAL DIAMOND

Shape and Cutting Style

ROUND BRILLIANT

Measurements

4.69 - 4.75 X 2.97 MM

### GRADING RESULTS

Carat Weight

0.41 CARAT

Color Grade

J

Clarity Grade

VS 2

Cut Grade

EXCELLENT

### ADDITIONAL GRADING INFORMATION

Polish

EXCELLENT

Symmetry

EXCELLENT

Fluorescence

NONE

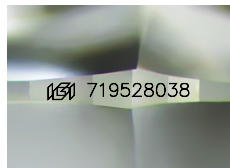
Identification Features

CLOUD, CHIP

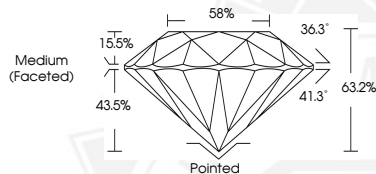
Inscription(s)

719528038

ELECTRONIC COPY



Sample Image Used



August 6, 2025

IGI Report Number 719528038

ROUND BRILLIANT

NATURAL DIAMOND

4.69 - 4.75 X 2.97 MM

Carat Weight

0.41 CARAT

Color Grade

J

Clarity Grade

VS 2

Cut Grade

EXCELLENT

Polish

EXCELLENT

Symmetry

EXCELLENT

Fluorescence

NONE

Inscription(s)

719528038



August 6, 2025

IGI Report Number 719528038

ROUND BRILLIANT

NATURAL DIAMOND

4.69 - 4.75 X 2.97 MM

Carat Weight

0.41 CARAT

Color Grade

J

Clarity Grade

VS 2

Cut Grade

EXCELLENT

Polish

EXCELLENT

Symmetry

EXCELLENT

Fluorescence

NONE

Inscription(s)

719528038



THIS DOCUMENT WAS PRODUCED WITH THE FOLLOWING SECURITY MEASURES: SPECIAL DOCUMENT PAPER, INK SCREENS, WATERMARK, BACKGROUND DESIGNS, HOLOGRAM AND OTHER SECURITY FEATURES NOT LISTED AND DO EXCEED DOCUMENT SECURITY INDUSTRY GUIDELINES.

For terms & conditions and to verify this report, please visit [www.igi.org](http://www.igi.org)